

# **Quick Start-up Guide for RoCKNet**

## **About this document**

This document is for the purpose of explaining how to install and set up RoCKNet monitoring software.

It will mention the features provided by this product and explain how to set up them up in order to effectively monitor your network and resources.

## **System Requirements**

The RoCKNet monitoring tool comprises of the RoCKNet Admin and RoCKNet Agent.

In order for RoCKNet to run a Firebird database is required and will need to be installed if not present in the current environment.

RoCKNet is suitable to be installed on Windows XP, Vista, Windows7, Windows8, Windows8.1 Server2003, Server2008, Server2008R2, Server2012, and Server2012R2.

## **Product Features**

RockNet is a powerful Network and Resources Monitoring tool that provides Real Time and Historical analysis of your network and system resources.

Its features include:

- Notification when Routers, Servers and workstations have disconnected from a network
- Provision of System uptime for Servers and Workstations both local and remote
- Informing on CPU usage of devices
- Informing on memory usage of devices
- Providing folder and file sizes on Servers and Workstations

Due to RockNet's flexibility, new requirements from customers can be implemented.

To contact the RockNet team email: [info@rocksoftware.co.uk](mailto:info@rocksoftware.co.uk)

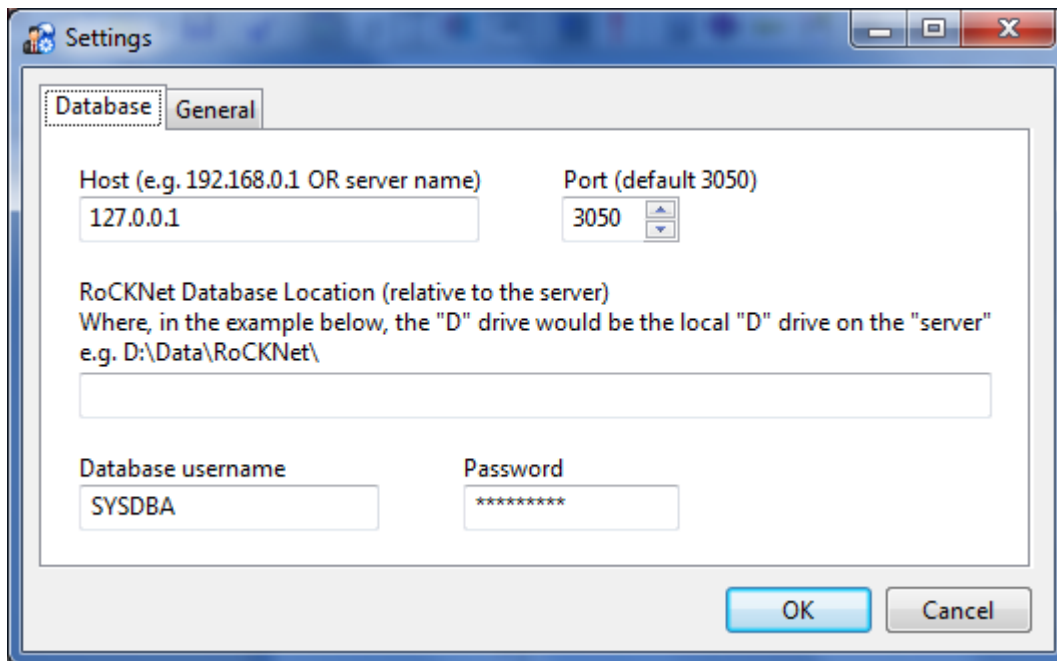
## Quick Start Configuration

RockNet is very easy to install and the below steps will get you up and running in just a few minutes.

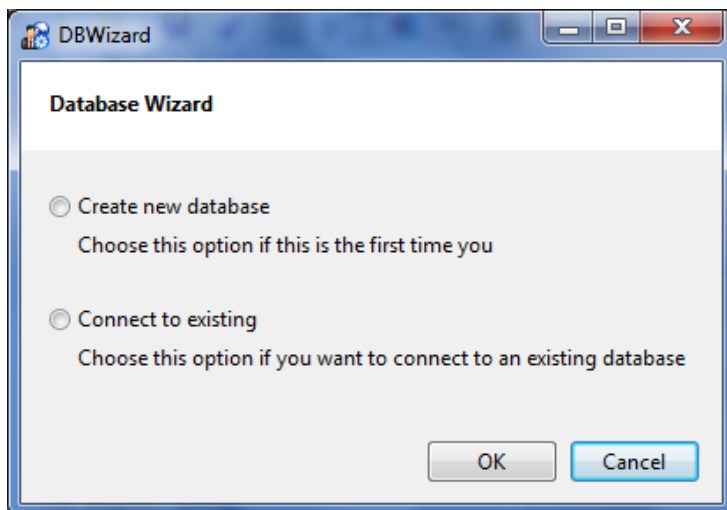
First of all ensure that you have installed a Firebird Server application.

The second step is to run the RoCKNet Admin and RoCKnet Agent installers.

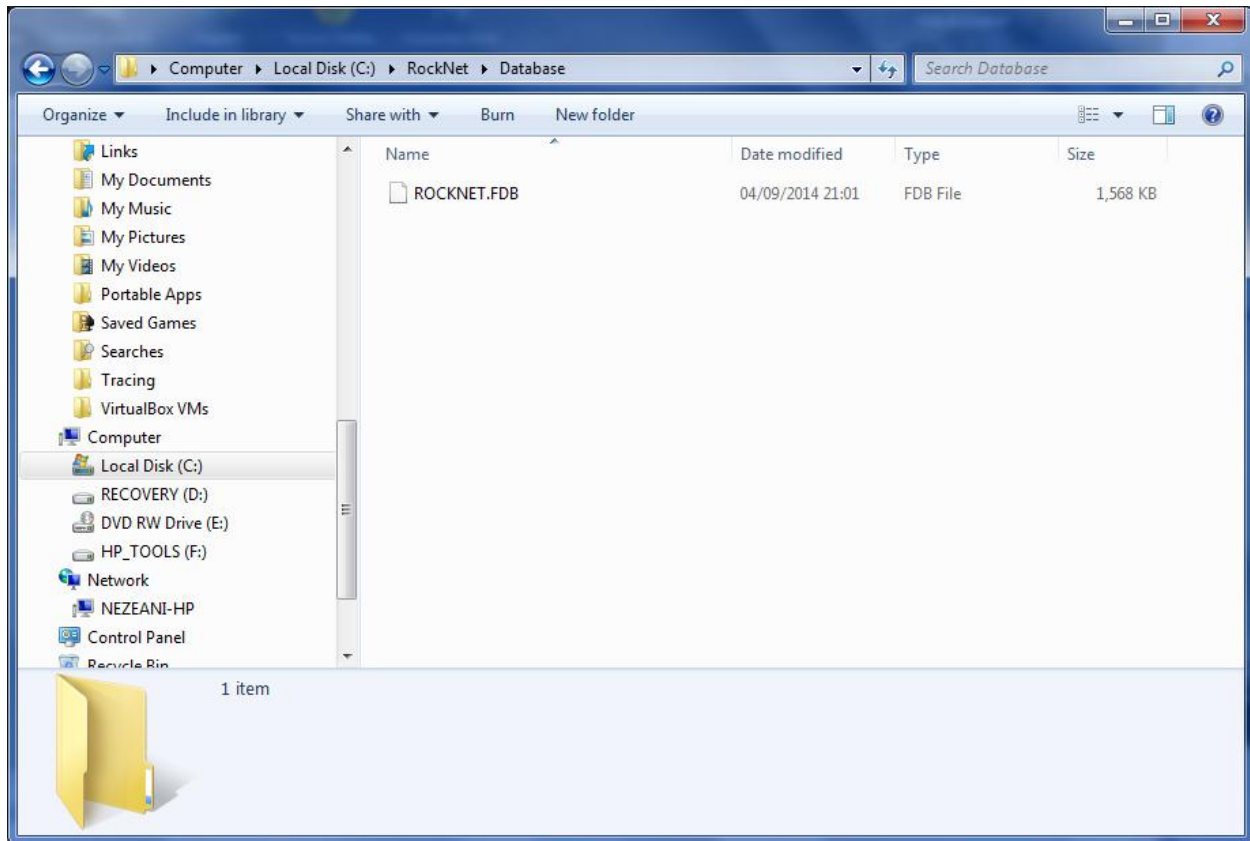
The third step is to run the RoCKNetAdmin.exe and provide the appropriate path for ROCKNET.FDB



When this path is provided the Database Wizard will prompt you to either create a new database if it's a first time install or to connect to an existing database if not, select an appropriate option.



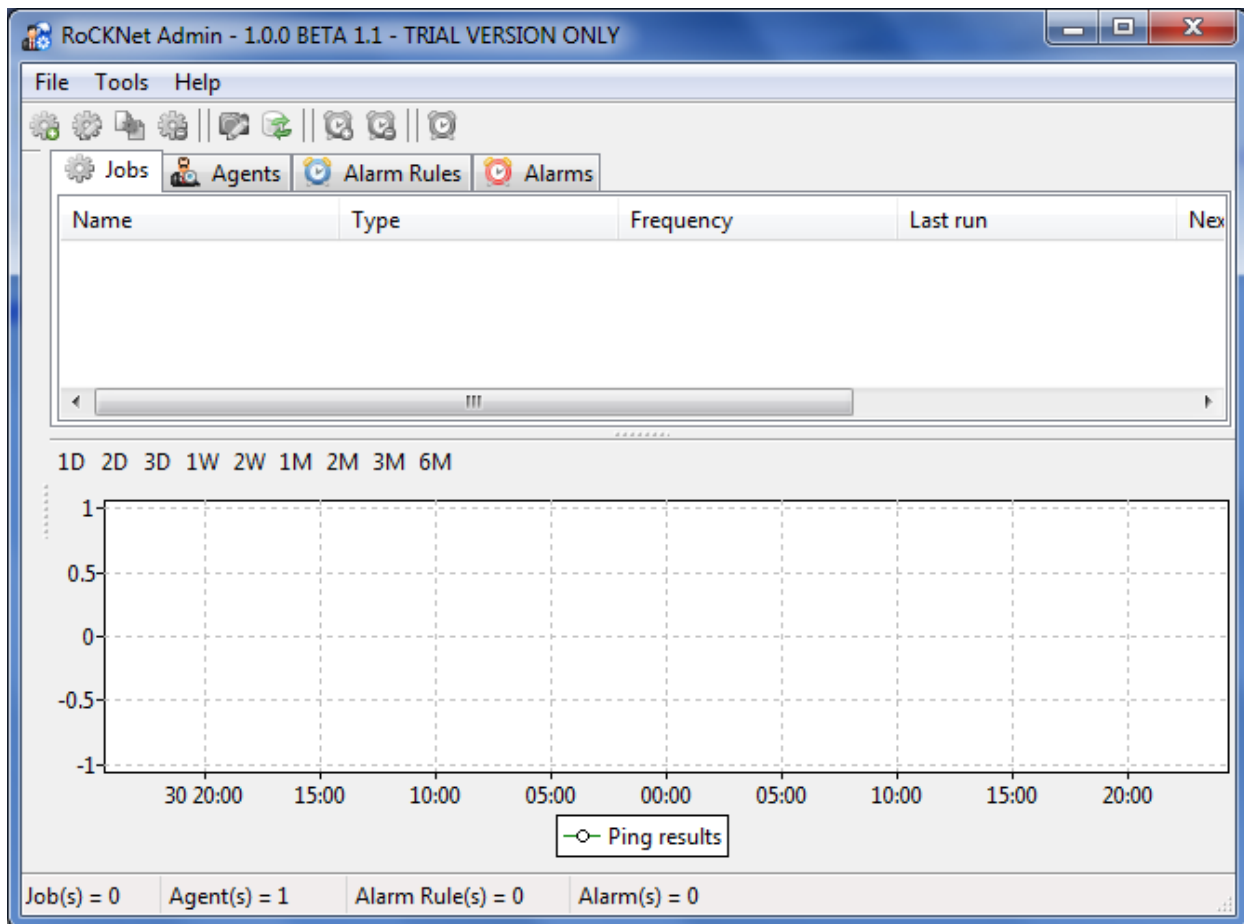
If you are creating a new database check the intended database location to ensure that ROCKNET.FDB has been created as displayed in the below image.



The last step here is to run RockNetAgent.exe and ensure that it contains the appropriate path for ROCKNET.FDB.

## Set-Up Configurations

In order to schedule tasks in RoCKNET ensure RoCKNetAgent.exe is running on the device that is to be monitored. Then run RoCKNetAdmin.exe from any preferred terminal where the administration and monitoring will be carried out. Tasks can be scheduled by clicking on the Add jobs icon in RoCKNetAdmin. The icon is located just below the File menu and has a green + sign attached to it. Other functions available include copying, editing and deleting jobs. These can all be achieved easily by highlighting the relevant job that needs to be either copied, edited or deleted and selecting the appropriate function button.



When the Add jobs icon is clicked on, a display box prompts for a job name to be provided, for a Type of job to be selected and to assign the job to an Agent.

Add Job - Properties

Name:

Type: Uptime

Assigned to: NEZEANI-HP

Run every: 1

Minutes

☒ Uptime

The Uptime of the PC that the Agent is running on will be recorded

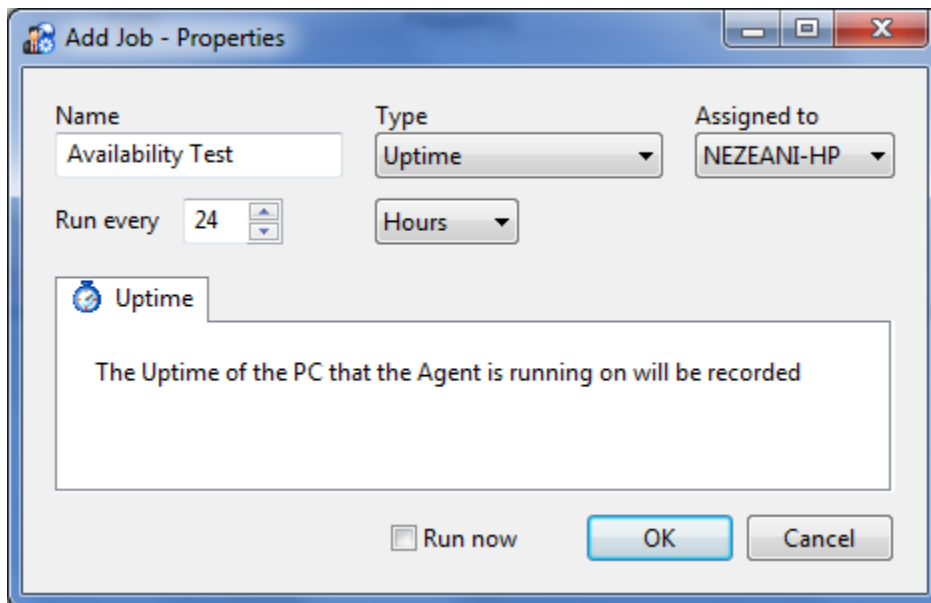
☐ Run now OK Cancel

You have the option to run the job every so minutes or hours depending on what is required to be

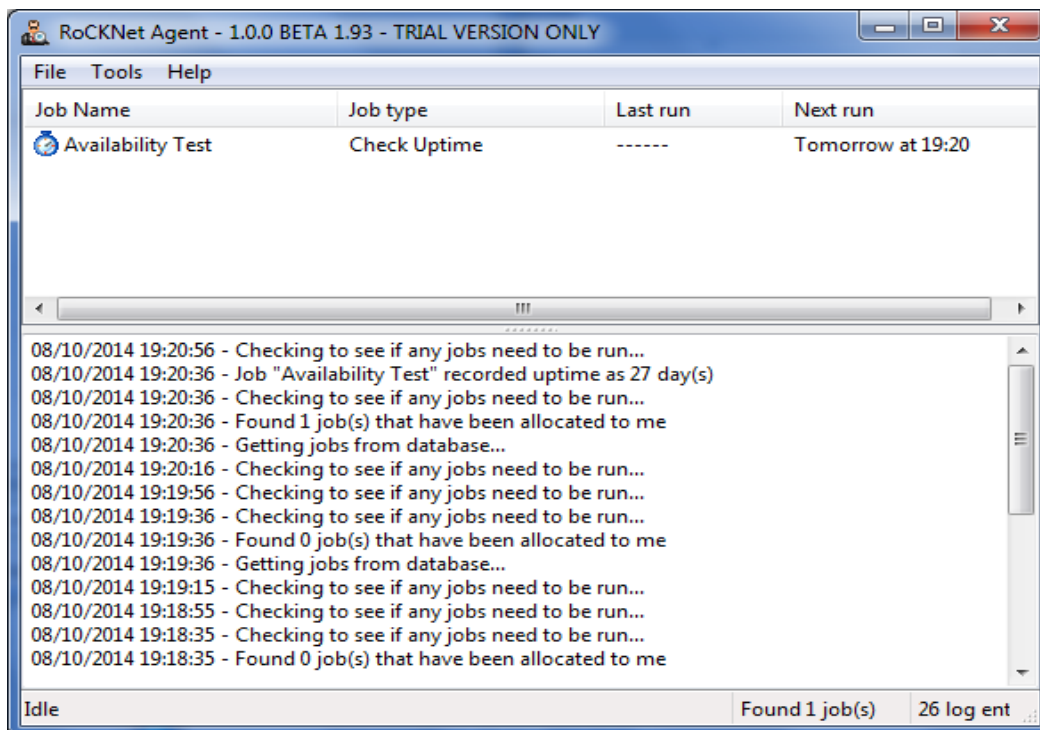
achieved.

In order to run an existing job straight away rather than waiting for a scheduled time select the run now option.

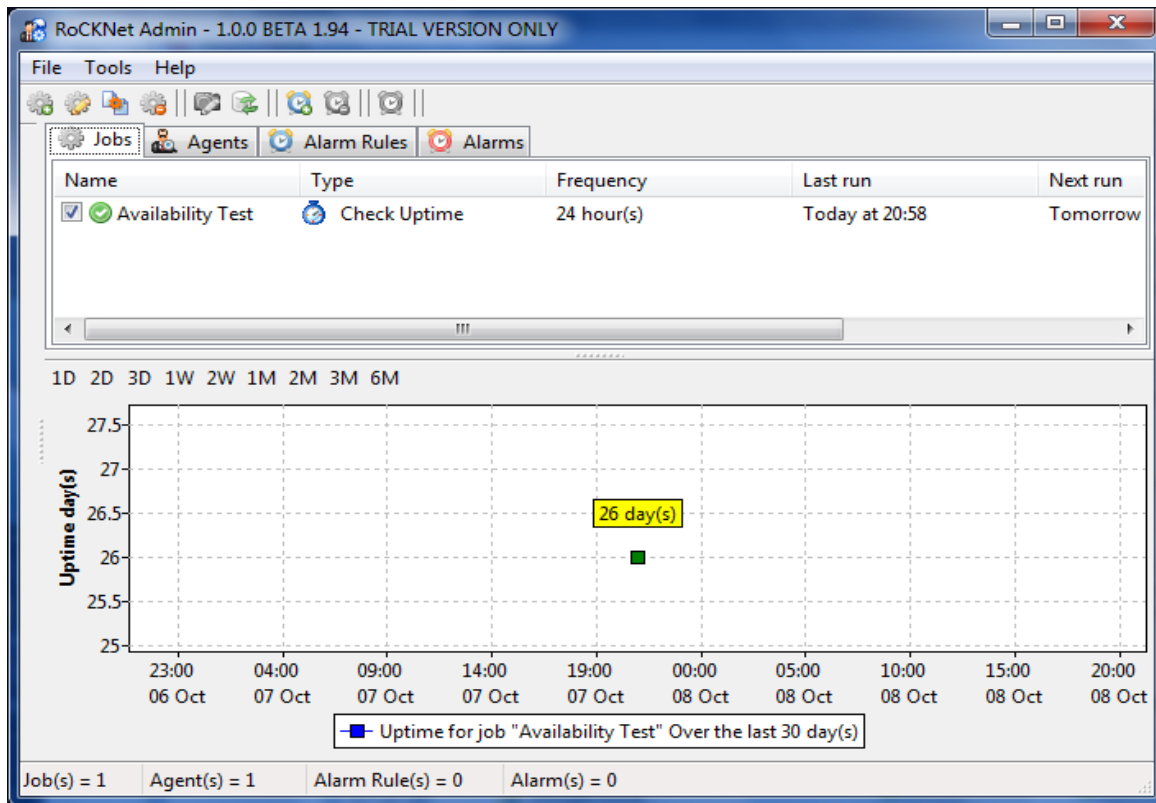
Below is a diagram of a Job with the name Availability Test, a job Type of Uptime, assigned to Agent NEZEANI-HP and set to run every 24 hours.



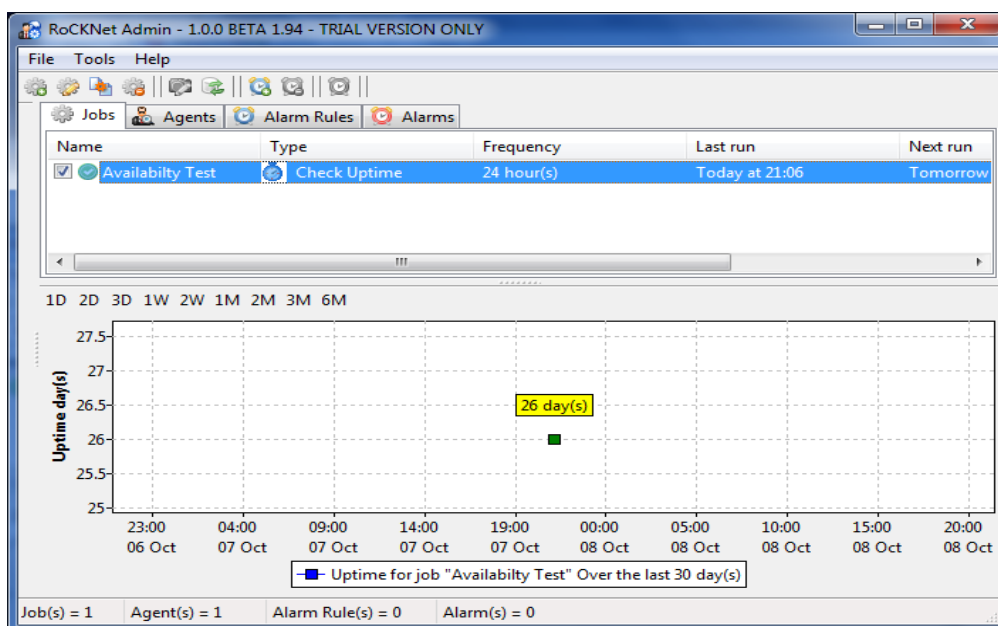
When the Agent detects the requested job or jobs it displays the details as can be seen below



RoCKNetAdmin also displays job details and provides more information than that displayed in RoCKNetAgent. While RoCKNetAgent will only provide details of a job or jobs assigned to it, RoCKNet Admin provides job details of all jobs assigned to various RoCKNet Agents. This enables an administrator to monitor all jobs from a single location



Another available feature in RoCKNet Admin is notification through raising alarms. Alarms can be set to notify administrators by selecting the job and clicking on the Add an alarm icon.



Alarm Rules

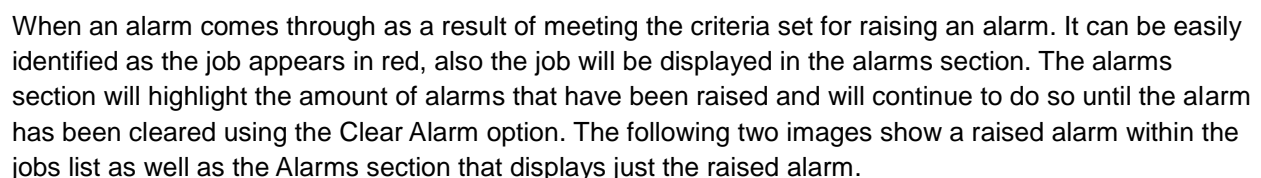
Alarm Rule

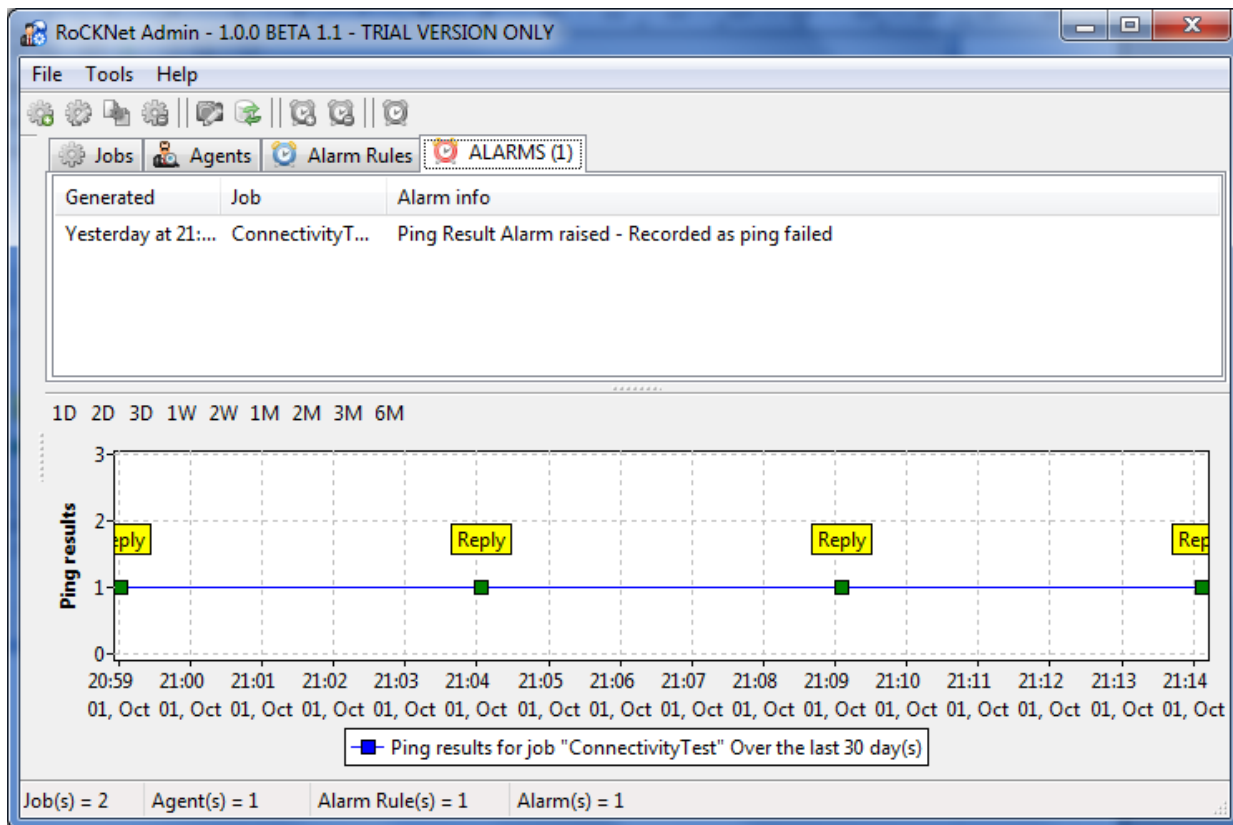
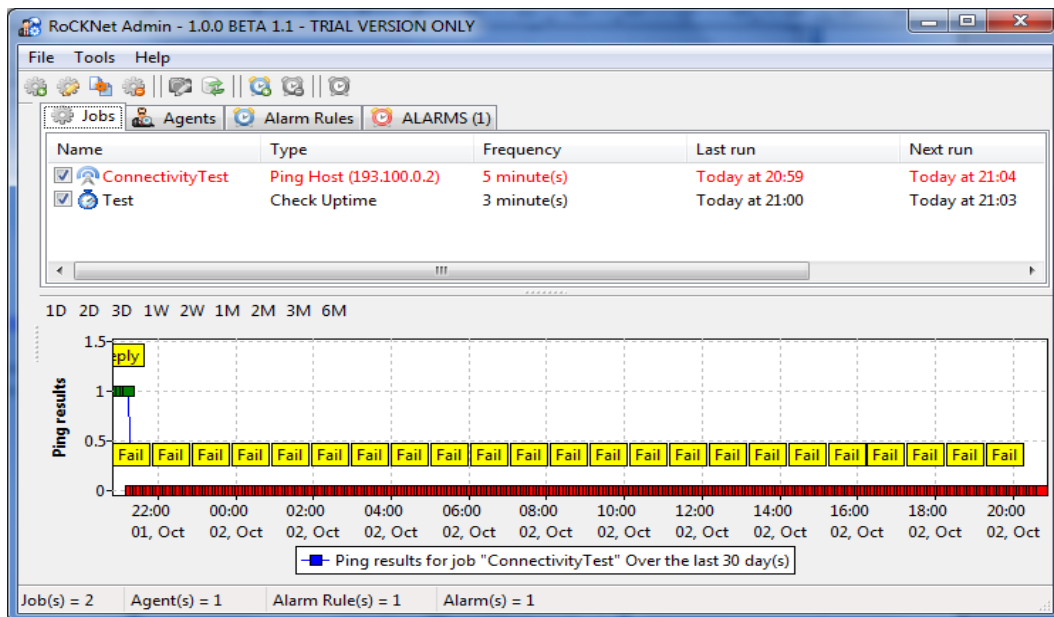
Create an Alarm Rule based on Job: ConnectivityTest

Ping rule Max Folder Size

Generate Alarm when Generate Alarm on first

OK Cancel



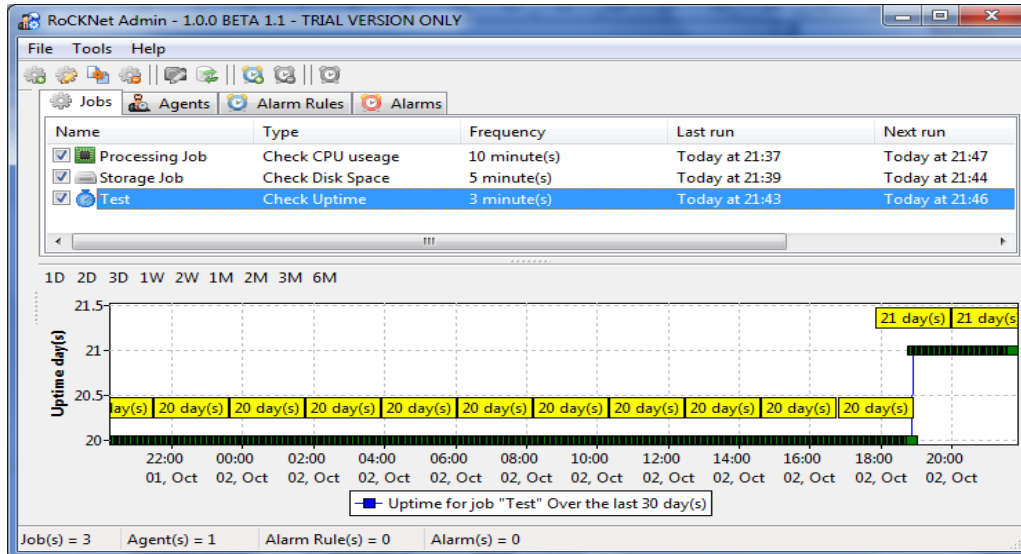


The graph that accompanies the jobs provides more detail with job status. As both current and historical time of job failures and success are all recorded.



## Licensing

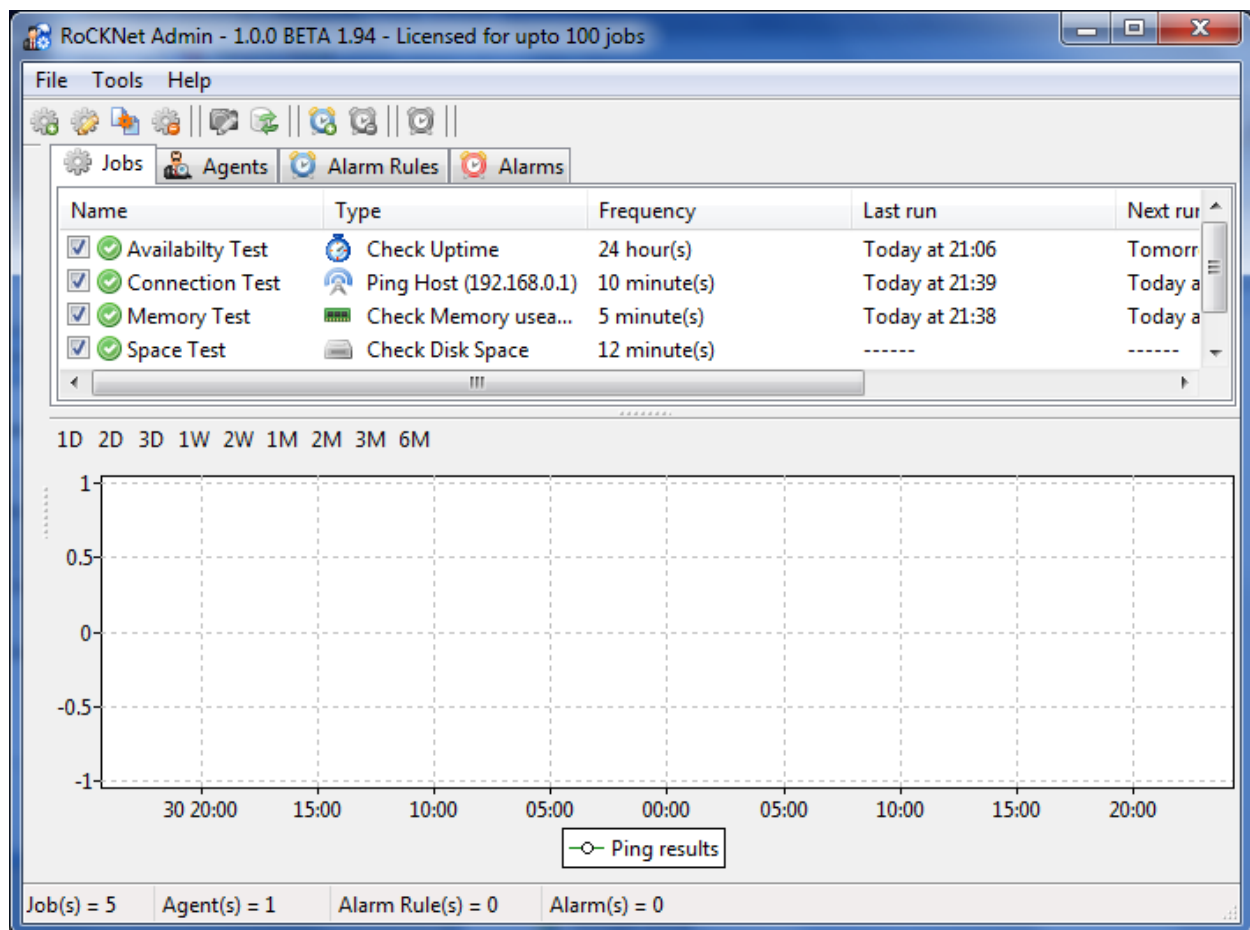
There are different ranges of licences available; a trial licence provides the capability of three jobs to be run at the same time.



To increase amount of jobs that can be added to RoCKNet requires extra licence to be purchased. A code will be provided after purchase and will need to be added to RoCKNet. Enter the code by going into RoCKNetAdmin, clicking on tools and then register.

The screenshot shows the 'Register' dialog box. It has a title bar with a close button (X). The dialog contains two input fields: 'Registered to:' with the text 'Unregistered' and 'License key:' with the text '1'. At the bottom are 'OK' and 'Cancel' buttons.

The next image displays RoCKNetAdmin running with a 100 job licence



Other ranges of licensing are available and include 5, 10, 25, 50, 250, 500, 750, and 1000 as well as unlimited jobs.

In order to purchase extra licences visit <http://www.shareit.com/product.html?productid=300643405>