



## SCADA, HMI & more... automation software interface

### High performance - LOW COST

**Plant View** is a graphic SCADA (Supervision, Control and Data Acquisition) supervision package for industrial environment, ideal to create control, supervision and management application both for production plants and single stations (HMI)

**Plant View turns to:**

- the designer, offering simplicity of use and the fastest way to realize his project
- the final user, that can use a great graphical interface, interactive and simple to manage

This is possible thanks to the particular structure of the product, that makes modularity, efficiency and simplicity its main features.



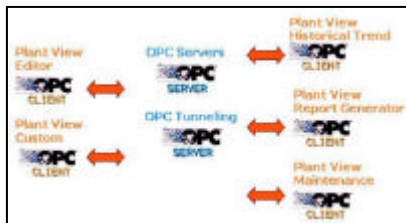
#### Plant View HMI – SCADA

The great power of Plant View comes from a very linear and simple based philosophy: it makes extensive use of the Client/Server architecture built according Microsoft standards, so it can access directly to the most powerful technologies (like OPC, COM, DCOM, OLE, ACTIVEX, VBA, DDE, SQL) in native mode.

The alignment with these widely diffuse standard is the best guarantee for investment, removing the risk of being outdated.

#### Modular architecture (Plant View Suite)

Plant View is not only HMI SCADA, but a complete suite of modular application, based on OPC technology and on a Client/Server architecture for a global plant management. PlantView Suite includes:



- FAST OPC servers, for communication with most popular control devices
- OPC tunneling, dedicated to data exchange with other applications
- PlantView Historical Trend, for historical data management
- PlantView Alarm History, for alarms and events analysis
- PlantView Report Generator, to create time based or event based production reports
- PlantView Maintenance, for the complete maintenance management



FAST SpA - Via Talete 2/4 - 42048 Rubiera (RE) - ITALY

Tel. (+39) 0522.622411 Fax (+39) 0522.627194

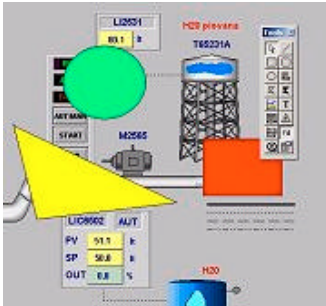
<http://www.fastautomation.it>



## Integrated development system

Plant View HMI-SCADA includes in a single license development and runtime: the software architecture keeps the development system integrated with the runtime module, so that every change can be immediately tested or made active in the same environment. This way the projects construction becomes faster and more productive, letting the user save time and limit costs. Moreover, the costs and the onerous management of two licenses (run time + development) are canceled. Development license is not required.

Plant View has a really powerful integrated **Graphic Editor**, with simple but very efficient features. The designer can directly access to libraries including symbols and complex graphic objects, create new objects and/or group them to customize the supervision.



The **Graphic Editor** includes all the most advanced graphic function like: rotate, drag & drop, flip, align, spacing, appear / disappear, zoom, import / export and much more. It also allows to import BitMap images and export the graphic pages as a bitmap, to be printed or sent or used as a documentation.

The **Toolbox** lists all the objects that can be placed on the graphic pages, which can be used as a single object or grouped together to create more complex figures. Each object, of each kind, can be made dynamic in order to behave in different ways according to the events.

## OPC technology

OPC is the most up to date worldwide standard of interoperability in industrial automation and process control for data exchange among production devices, business/office application and production management systems (MES).



The huge benefit for the enterprises is definite: greatest operating efficiency, lowest interfacing costs, immediate data availability.

All the PlantView Suite applications are based on OPC technology that guarantees high efficiency, robustness and integration with each other OPC compliant application.

## Integrated VBA



Plant View integrates the really powerful Microsoft Visual Basic for Application (VBA) development systems that allows the designer to customize the supervision in many different ways in order to satisfy every special requirement

That means that the extraordinary Visual Basic for Application power is completely available for developer and it is guarantee by Microsoft® itself.

## Unlimited tags



package is commercialized with a "flat" method at a single cost: no economical limits are introduced to the number of tags.

**High performance - LOW COST**