

PstViewer Pro User's Manual

Table of contents

Introduction	2
System requirements	3
Technical support	4
About Us	4
User interface	4
Explorer tree	6
Favorites tree	7
Filter E-mails	9
Mail list	10
Message viewer	12
Main menu	14
Search messages dialog	18
Status bar	19
Command line parameters	20
Mail actions	23
Mail enumeration	24
Mail exporting	24
Configuration	30
Settings	31
L10NTool.exe	32
File associations	34
Print preview	35
Updating and update settings	36
Logging	37
Enterprise deployment	37
Deployment	37
Registration	38
Command line switches	39
Transferring activation	42
Releasing license activation	42

Introduction

What is PSTViewer Pro?

PSTViewer Pro is an application for viewing and exporting MSG, EML, PST and OST files, including those containing email messages, contacts and tasks. PSTViewer Pro does not require MAPI installed on computer to work with PST and OST files. You can view message headers, bodies, attachments and perform various actions on them including exporting them to different file formats.

PSTViewer Pro key features

- Viewing headers, bodies and attachments of messages in MSG, EML and PST formats.
- Support for reading PST and OST files without MAPI (Messaging Applications Programming Interface) installed.
- Ability to view contacts, tasks, appointments, etc.
- Viewing messages with Plain Text, RTF and HTML bodies.
- Lots of possible actions for messages, such as Reply, Forward, Print, Export.
- Exporting messages to multiple formats with lots of possible export preferences.
- Advanced search, filtering and file system navigation system.

- Highly customizable user interface with profiles support.
- Command line utility.
- Integration with Windows and default email client.

Supported message formats

- MSG - Microsoft Outlook message file; compatible with other programs that use Microsoft's Messaging Applications Programming Interface (MAPI).
- EML - E-mail message saved by Microsoft Outlook Express, Thunderbird, Lotus, and other e-mail programs; may also contain e-mail attachments, or files sent with the message.
- PST - Personal Storage Table, file format used to store local copies of messages, calendar events, and other items within Microsoft Outlook.
- OST - Off-line Storage Table that stores e-mail messages and other data saved by the application from an Exchange server.

If you have any comments or suggestions for improving PSTViewer Pro, we will be glad to hear your feedback. Please address your comments to support@encryptomatic.com, Subject "PSTViewer Pro Feedback".

System requirements

Before installing PSTViewer Pro, be certain that your computer meets the following minimum software and hardware requirements.

Requirement		Description	Note
Processor		Recommended: 1 gigahertz (GHz) processor	
RAM		Recommended: 512 MB	
Available Hard Disk Space		55 Mb of available space required on installation drive	
Operating System		Microsoft Windows XP Professional SP3 Microsoft Windows Server 2003 Enterprise Edition SP2 Microsoft Windows Server 2008 Enterprise Edition SP2 Microsoft Windows Vista SP2 Microsoft Windows 7 SP1 Microsoft Windows XP Professional x64 Edition SP2 Microsoft Windows Vista x64 SP1 Microsoft Windows 7 x64 SP1 Microsoft Windows Server 2008 x64 Enterprise Edition SP2 Microsoft Windows Server R2 Microsoft Windows 8 and 8.1	
Software	Windows Installer	Version 3.1 or later	Checked and updated automatically during installation

	.Net framework	Version 2.0 or later for x86 platforms Version 3.5 or later for x64 platforms	Checked and updated automatically during installation
--	----------------	--	---

Technical support

We invite you to use the comment form on our website to submit bug reports, feature requests, and usability comments. All submitted comments are reviewed by the product manager and given serious consideration.

Visit www.encryptomatic.com/support.

About Us

Our Mission

To provide solutions that make our customers' lives more enjoyable and secure.

Our Vision

A safe world with the freedom to communicate freely and securely.

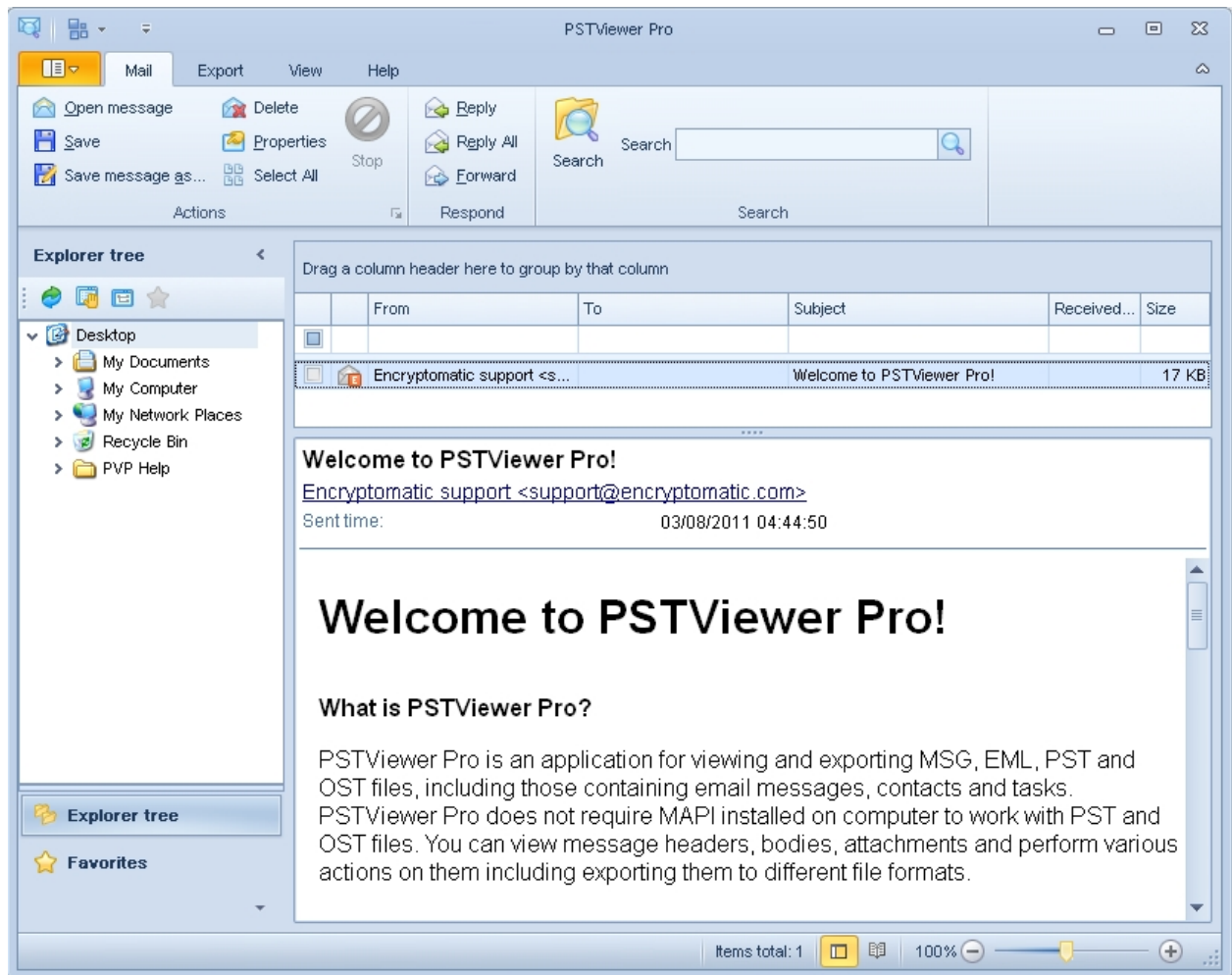
About Us

Encryptomatic LLC is a privately held limited liability company headquartered in the historic downtown district of the twin towns of Moorhead, MN, and Fargo, ND USA, in heart of the beautiful Red River Valley of the North, where we enjoy snowy winters, beautiful summers, clean air, great fishing and an abundance of seasonal outdoor activities. Our average workday commute is about ten minutes.

We were founded in 2005 by our President, Darren Leno, a former Product Manager for Microsoft Business Solutions, and Great Plains Software, Inc.

For more information, please visit <http://www.encryptomatic.com/about-us/>

User interface



Main window of PSTViewer Pro consists of following logical zones: **Mail list**, **Message viewer**, **Explorer tree**, **Favorites tree**, **Status bar**, **Toolbar** and **Main menu**.

Explorer tree represents a tree of folders, available on your computer and network. Upon clicking on a folder, containing messages in format, recognizable by PSTViewer Pro, these messages will be enumerated and added to **Mail list**.

Mail list is a table, containing information about messages in active folder. Messages can be sorted, filtered and grouped by their attributes.

Message viewer displays header, body and attachments of a message, selected in **Mail list**.

Status bar shows description of hovered user interface elements, name and status of current action, number of messages in active folder and other information.

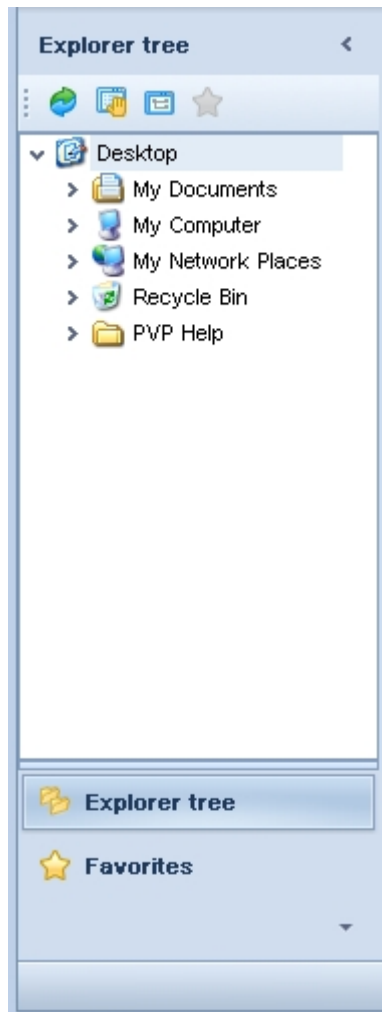
Toolbar and **Main menu** provide access to a number of application tweaks and customizations and can be used to perform mail actions.

Refer to the topics about each of the interface elements for more detailed information.

Links

[Explorer tree](#)
[Favorites tree](#)
[Mail list](#)
[Message viewer](#)
[Main menu](#)

Explorer tree



Explorer tree represents a tree of folders, available on your computer and network. Upon clicking on a folder, containing messages in format, recognizable by PSTViewer Pro, these messages will be enumerated and added to mail list.

Explorer tree lists folders, remote computers and network shared folders. Messages located in one of these places can be added to **Mail list** either by selecting item in a tree, or by right-clicking an item and selecting **Scan folder** from context menu. If **Scan folder with subfolders** item is checked, messages in subfolders will be also enumerated.

You can refresh folder tree to update display of recently renamed, created or deleted items by clicking **Refresh** button on the toolbar or by selecting it in the context menu.

Open in explorer context menu item and toolbar button are used for opening selected folder in Windows explorer.

Properties context menu item and toolbar button shows standard system properties dialog for selected folder.

Add to favorites toolbar button adds selected folder to active node of the favorites tree.

Docking functionality can be used to change the default position for the Explorer tree.

Links

[Favorites tree](#)

[Mail list](#)

[Mail enumeration](#)

[Docking Functionality](#)

Favorites tree



Favorites tree is a structure that allows quick access to frequently used folders and messages. Messages located in one of the folders can be added to **Mail list** either by selecting item in a tree, or by right-clicking an item and selecting **Browse** or **Browse with subfolders** from context menu.

To add folder to favorites, select it in the **Explorer tree** and click **Add to favorites** button on the toolbar. Messages can be added to favorites by dragging them from **Mail list** into the necessary location in the **Favorites tree**.

Folders can be manually created in the tree by selecting a node and clicking **New folder** in the context menu. New folder will be created as a child of the selected item.

Edit item name context menu item can be used to change selected folder's name.

Delete context menu item is used for deleting folders in the tree.

Docking functionality can be used to change the default position for the Explorer tree.

Links

[Explorer tree](#)

[Mail list](#)

[Mail enumeration](#)

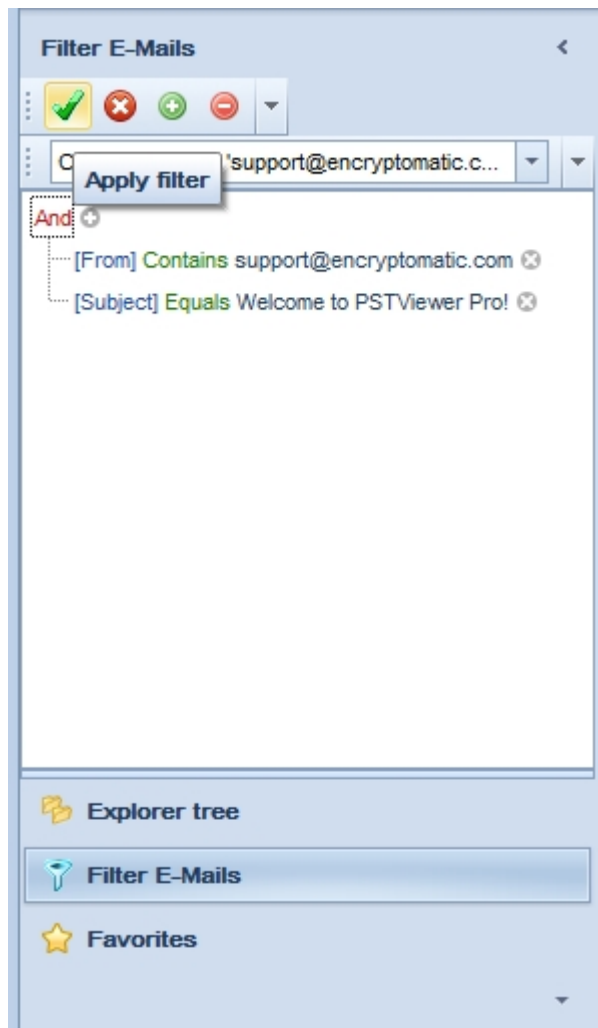
Docking Functionality

Filter E-mails

Filter E-mails

The **Filter E-mails** editor allows you to filter data (display those emails that meet specific requirements), by visually constructing filter criteria in a straightforward graphical form.

The **Filter E-mails** editor is used to edit filter criteria. To create and customize filter criteria, use the buttons embedded into the control and context menus supported by the editor's elements.




Add Conditions

To add a condition to a logical group, do one of the following:

- Focus any condition within the group or the group's logical operator and then press **INSERT**.
- Click the **+** button for the group.
- Click the group's logical operator and select **Add Condition**.

Delete Conditions

To delete a condition, do one of the following:

Focus the condition and press DELETE.
Click the  button.

Edit a Condition's Value

To edit a condition's value, click the operand value and type text.

To activate the operand value's edit box without changing the value, click the value or focus the operand value via the keyboard and press F2, SPACE, ENTER or ALT+DOWN

To close the active edit box, press ENTER.

To discard changes to the value and close the active edit box, press ESC.

Apply Filter

Click "**Apply**" to filter data using the created filter condition.

Clear Filter

To clear filter, click "Clear filter" button.




Links

[Favorites tree](#)

[Explorer tree](#)

[Mail list](#)

Mail list

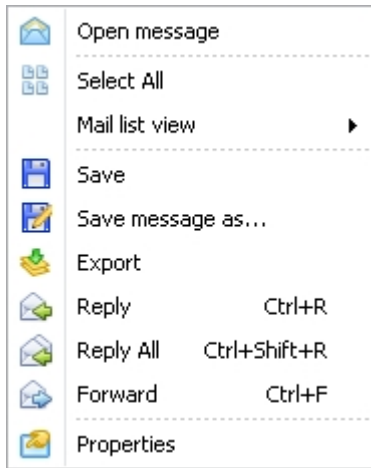
Drag a column header here to group by that column					
	From	To	Subject	Received time	Size
					
	 Encryptomatic support <support@encryptomatic.com>	Welcome to PSTViewer Pro!			17 KB

Mail list is a table, containing information about messages in active folder. Messages can be sorted, filtered and grouped by their attributes.

Mail list contains following columns: selector column, file type icon column and message attributes columns: subject, from, to, CC, BCC, delivery time, submit time, has attachments, internal path, source format, source path. User can select which columns to show in the table and which to hide.

Icons displayed for the messages in **Mail list** help to differentiate between file types of the messages and the presence of attachments.

Context menu



Right-clicking on a line in mail list table brings context menu for selected message.

Open message context menu item is used to open selected message in a default email client.

Mail list view context menu item allows disabling of filtering and grouping capabilities of **Mail list** component in case user does not need them.

Save context menu item allows user to save selected message in the specified folder preserving the same file name this message already has.

Save message as... context menu item allows user to save selected message in the specified folder with custom file name.

Export context menu item performs export action on selected message. User will be prompted to select and/or customize export profiles.

Properties context menu item displays **Mail information** dialog which shows information about message header and file properties and allows to view message's raw transport header and MAPI properties tree.

Note: **Open message**, **Save message as...** and **Properties** menu items are unavailable when multiple messages are selected.

Advanced Mail list tools

Mail list provides powerful tools for sorting, filtering, grouping messages and column management.

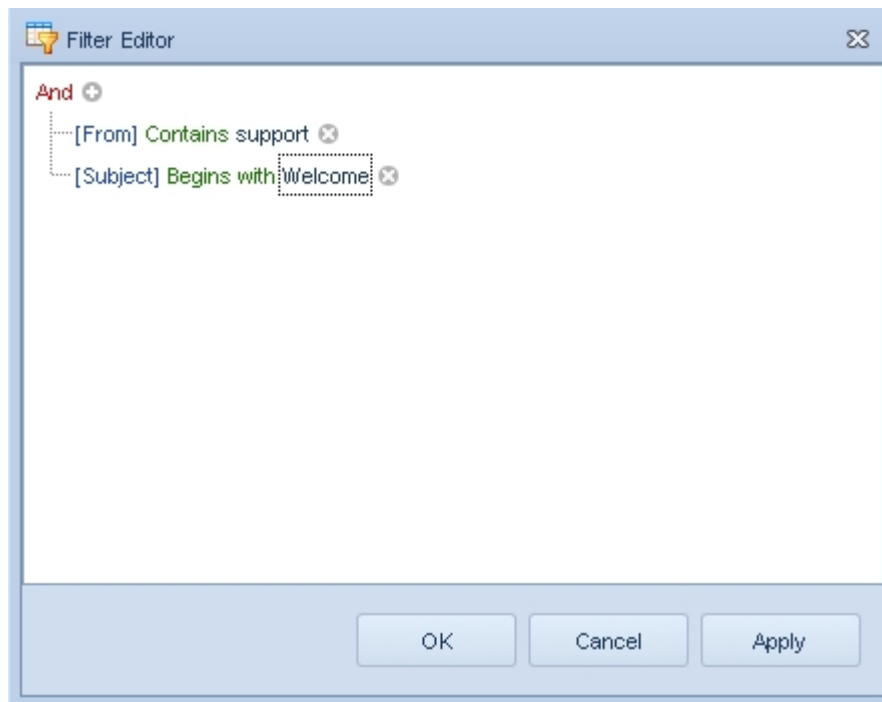
You can select which columns to display in the table by clicking **Column Chooser** in header context menu and dragging required columns from Customization window to the table. The order of the columns can also be changed using drag and drop.

The simplest way to create filter is to enter a value in one of the fields above the table. The contents of the table will be filtered according to the inputted data in the corresponding column. Resulting filter can be seen at the bottom of the table. It can be disabled and cleaned by unchecking checkbox near its description or clicking [x] button.

Another way to filter messages is clicking filter button in the column header (visible when mouse is hovering the header). It will bring a list of possible values for filter current column. This list will differ depending on column data type. For example, for subject column filtering values would include "Blank fields", "Non-blank fields", list of subjects of messages currently in the table and custom filter editor. For received time column filter would allow selecting date from Date picker control or selecting one of the predefined time-filtering

options like "Earlier this year" or "Last week".

Any of the earlier created filter rules can be picked from list, that will appear after clicking on the current filter rule.



Filter editor dialog can be used for more advanced filtering rule editing. It can be used either to create filter from scratch or to modify already created filtering rule. **Filter editor** can be called by selecting **Filter editor...** in column header context menu or by clicking **Edit filter** button in right bottom corner of the **Mail list** if filter is already created.

Filter editor creates logical constructs that are used for table filtering. These constructs are one or several logical conditions united by one of the logical operations (AND, OR, NOT AND, NOT OR). Logical conditions consist of comparisons contents of the columns with proposed value.

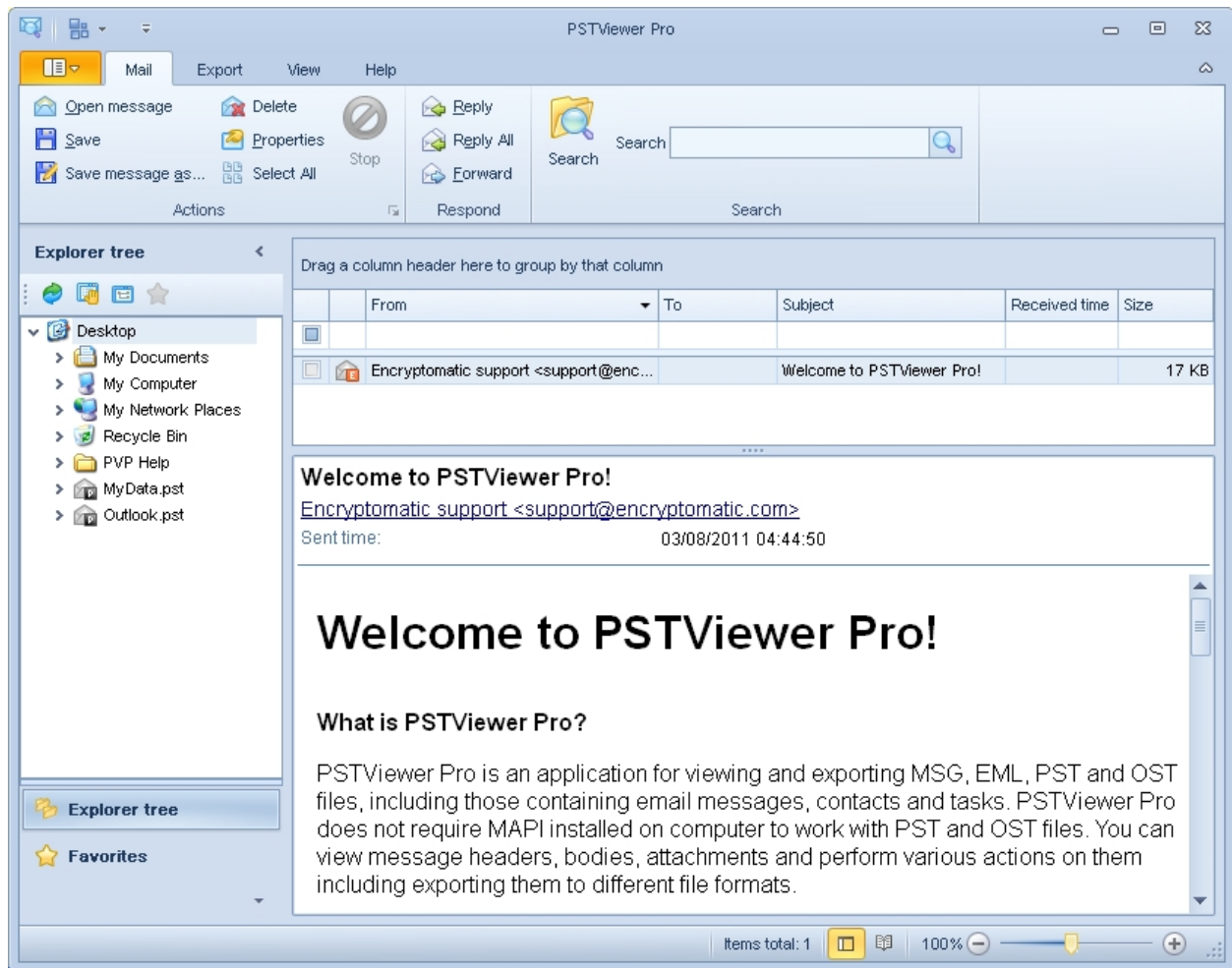
Message grouping can be done by the values of one or several columns in the table. To perform grouping, drag the column header into to grouping panel. It is possible to perform grouping by several columns. In this case, nesting order of the grouping columns will be determined by their relative position in grouping panel. It can be changed by dragging column headers inside of the grouping panel. To cancel grouping, drag column headers back into the table.

Docking functionality can be used to change the default position for the Explorer tree.

Links

[Explorer tree](#)
[Favorites tree](#)
[Message viewer](#)
[Mail actions](#)
[Mail enumeration](#)
[Docking Functionality](#)

Message viewer



Message viewer displays header, body and attachments of a message, selected in **Mail list**.

Message viewer consists of two main parts - **Message header viewer** and **Message body viewer**.

Header viewer

Message header viewer displays attributes from message header (sender, recipient, CC and BCC fields, sent and delivery times) and attachments list.

Clicking on header fields, containing email address, will result in creating a message in default email client with selected address as recipient.

Clicking on attachment items, opens them in a default application associated with corresponding file types. Right-clicking on attachments brings context menu for selected object.

Open attachment context menu item is used to open selected attachment in a default application (same action as clicking on item).

Open with... attachment context menu item brings **Open with** system dialog, that allows user to specify which application will be used to open this attachment (and optionally other files of this type).

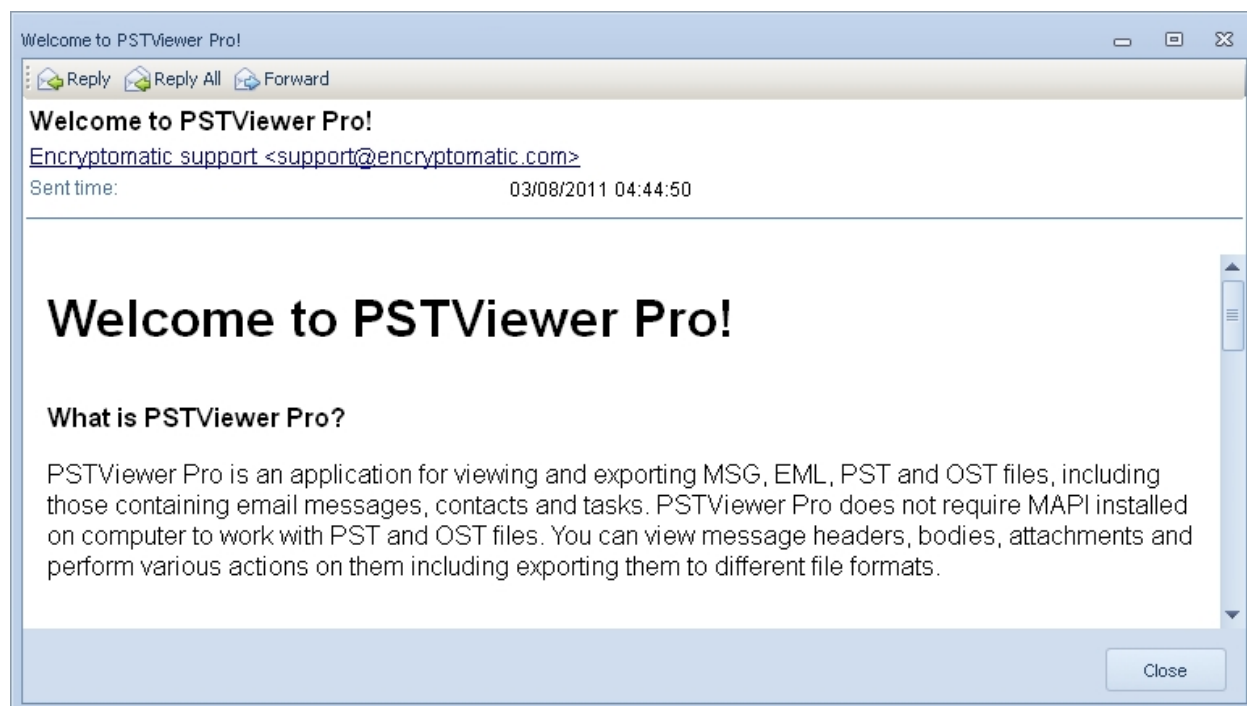
Save attachment context menu item allows user to save selected attachment item in the specified folder preserving the same file name this attachment item already has.

Save As... attachment context menu item allows user to save selected attachment item in the specified folder with custom file name.

Save All attachment context menu item allows user to save all attachment items in the specified folder preserving the same file names these attachment items already have.

Message body viewer

Message header and body can be viewed in separate window if double-clicked in Mail List.



Message body viewer displays body of email message. It is displayed with all available formatting, unless **Use plain text** option is activated.

User can select message body and copy it into different application. If that application supports rich text editing (i.e. MS Office applications) source formatting of message body will be preserved.

Right-clicking on message body displays context menu.

Select All message body context menu item selects all text in the message body.

Copy message body context menu item is used to copy selected text of the message body into the clipboard.

View source message body context menu item opens file, containing source code of the selected message in Notepad.

Docking functionality can be used to change the default position for the Explorer tree.

Links

[Mail list](#)

[Mail actions](#)

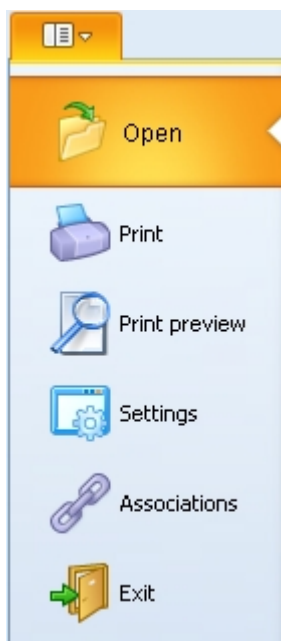
[Docking Functionality](#)

Main menu

Main menu of PSTViewer Pro consists of 5 top-level menus - **File**, **Mail**, **Export**, **View** and **Help**.

Please note, that main menu is completely customizable. This article describes elements in order they are grouped by default. Check [User interface tweaks](#) article for more information.

File menu



File menu contains following items:

Open menu item is used to open message file of one of the supported formats in PSTViewer Pro. Messages contained in selected file will be listed in mail list.

Print menu item prints selected message using default printer and default printing settings.

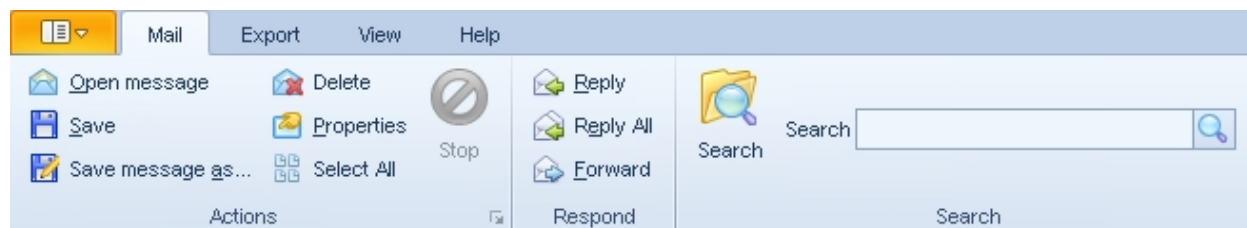
Print preview menu item opens **Preview** window that allows various settings and customizations related to the process of printing. Check [Print preview](#) article for more information.

Settings menu item brings **Settings** dialog, that allows user to set font used in application and interface reactivity time. See [Settings](#) article for more details.

Associations menu item allows user to associate MSG, EML and PST files with PSTViewer Pro. See [File associations](#) article for more details.

Exit menu item closes all messages opened in PSTViewer Pro and quits the application.

Mail menu



Mail menu contains following items:

Open message menu item is used to open selected message in a default email client.

Save menu item allows user to save selected message in the specified folder preserving the same file name this message already has.

Save message as... menu item allows user to save selected message in the specified folder with custom file name.

Delete menu item closes all messages opened in PSTViewer Pro and quits the application.

Properties menu item displays **Mail information** dialog which shows information about message header and file properties and allows to view message's raw transport header and MAPI properties tree.

Select All menu button selects all emails shown in Mail List window

Search menu item opens **Search** window

Reply menu item opens default email client with a reply to a sender of a selected message.

Forward menu item opens default email client, forwarding selected message to selected recipients.

Note: see [Mail actions](#) section for more information about each of the actions, performed by items of **Mail** menu.

Note: only **Search** menu item is available when no messages are present in mail list. **Open message**, **Save message as...**, **Reply** and **Properties** are unavailable when selecting multiple messages.

Export menu



Export menu contains following items:

Add to a PDF file adds selected messages to PDF file.

Export menu item performs export action on selected message. User will be prompted to create, select and/or customize export profiles.

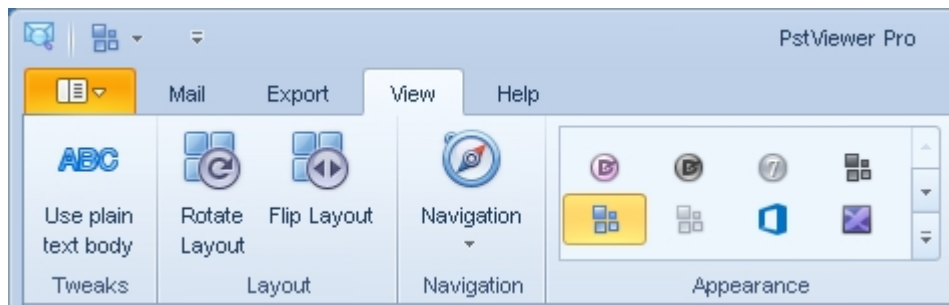
Edit profile menu item allows user to change predefined profiles settings.

New profile menu item allows to create new profiles.

Delete profile allows to delete currently active export profile.

Restore defaults allows user to reset export profiles settings to default.

View menu



View menu contains following items:

Use plain text body menu item switches display of all messages in **Message viewer** to plain text body. In plain text mode, contents of message body will be displayed without formatting.

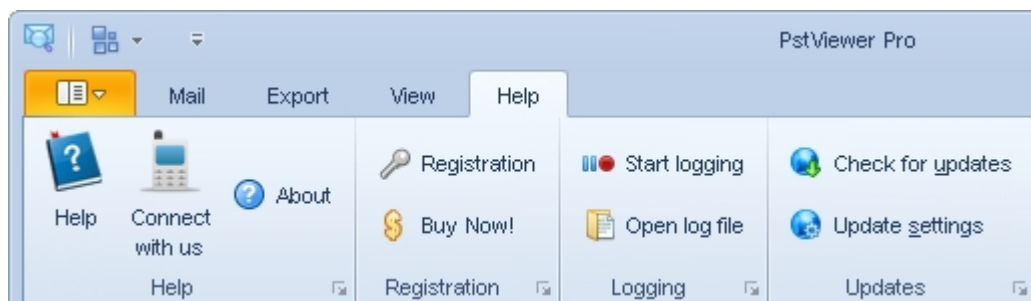
Rotate Layout menu allows to rotate **Mail List** and **Message viewer** panels.

Flip Layout menu allows to swap **Mail List** and **Message viewer** panels if they are displayed vertically.

Navigation allows user to switch between Explorer tree and Favorites.

Appearance menu item allows user to choose various skins for PstViewer Pro.

Help tab menu



Help menu contains following items:

Help menu item opens user's guide.

Connect with us opens webpage where user can find more information or contact support team.

About menu item shows windows with information about PSTViewer Pro and your license key.

Registration menu item opens dialog that allows to register your copy of application.

Buy now menu item opens a webpage where user can purchase a copy of PSTViewer Pro. The page will be opened in default browser.

When **Start logging** menu item is selected, application starts logging internal information into log file. (User will be asked to specify its name and location) This file can be later sent to technical support to help resolving problematic situations. See [Logging](#) article for more information.

Open log file menu item opens log file, generated after selecting **Start logging** command, in default text editor.

Check for updates menu item checks in newer version of PSTViewer Pro is available.

Update settings menu item opens configuration dialog for updater. See [Updating and update settings](#) for more information.

Links

[User interface tweaks](#)

[Message viewer](#)

[Docking Functionality](#)

[Mail actions](#)

Search messages dialog

The screenshot shows the 'Search messages' dialog box. It has a title bar with the text 'Search messages' and a close button. The dialog is divided into two tabs: 'Search' and 'Advanced'. The 'Search' tab is selected. Inside the 'Search' tab, there are six text input fields arranged in two rows of three. The first row contains 'From', 'Subject', and 'Header Text'. The second row contains 'To', 'CC', and 'Message Text'. Below these fields is a 'Date' section with two dropdown menus labeled 'Start date' and 'End date'. At the bottom of the dialog is a 'Search options' section containing seven checkboxes: 'Include subfolders in search' (checked), 'Search in EML files (*.eml)' (checked), 'Search in MSG files (*.msg)' (checked), 'Search all PST/OST files in selected folder' (checked), 'Match case' (unchecked), 'Match whole word only' (unchecked), and 'Use regular expressions' (unchecked). At the bottom right of the dialog are two buttons: 'Search' and 'Cancel'.

Search messages dialog is used to search contents of messages.

On **Search** tab user enters text in **Text to search** field. The specified text is searched for in message headers and bodies.

On **Advanced** tab it is possible to specify in which part of message to perform search. Text can be searched for in **From**, **Subject**, **CC**, **From** message properties, the whole **Header text** or **Message body**.

Date block is used for date-limited searches. User can specify **Start Date**, **End Date** fields or both of them to provide time limitation for searches. Please note, that value in **End Date** field should always be later than value **Start Date**.

If **Include subfolders in search** option is checked, search will be performed recursively in specified folder and its subfolders. **Include *.eml** and **Include *.msg** checkboxes allow limiting searches only for files of certain type.

Match case enforces that hits have exactly the same case as the query. If this is disabled, the search is case insensitive.

Match whole word only will only result in a hit if the match consists of an entire word, not if it's partial (for example (but not limited to), whitespace separated).

In **Regular Expression**, the query will be handled like a regular expression.

List of special characters:

- . - any character
- \w - word character (letter or digit)
- \d - decimal digit
- \s - white-space character (space or tab)
- * - 0 or more matches of the previous element
- + - 1 or more matches of the previous element
- ? - 0 or 1 match of the previous element
- [] - group of symbols, for example [ABC]+ CAB - matches, CAD - doesn't match
- \ - escape character "\." if you need dot symbol
- | - OR operator, th(e|is|at) matches "the" and "this" in "this is the day"

After **Match whole word only** and **Use regular expressions** checkboxes are set to be active, **Regular expression** will be searched among separate words of text that meets searching results. Modifiers ('^', '\$', \b) will be removed in case they were previously used.

For more detailed criteria of searching for messages, please see filtering options of **Mail list**.

Links

[Mail list](#)
[Mail actions](#)
[Mail enumeration](#)

Status bar



Status bar shows description of hovered user interface elements, name and progress of current action, number of messages in active folder and other information.

Links

[User interface tweaks](#)

Command line parameters

Command line interface of PSTViewer Pro can be accessed via PSTViewerConsole.exe file, located in the same directory as PSTViewer.exe.

Usage: `PSTViewerConsole.exe [options] [<file1> [<file2> ...]]`

Options description:

h, help

Show usage description.

Usage: `PSTViewerConsole.exe --help`

a, associate

Associate specified file extensions with application.

Usage: `PSTViewerConsole.exe --associate <format[s]>`

p, print

Print specified message to default or specified printer.

Usage: `PSTViewerConsole.exe --print <file[s]>`

e, export

Export messages with predefined profile.

Usage: `PSTViewerConsole.exe --export <profile> <file[s]>`

Example:

```
"C:\Program Files\Encryptomatic, LLC\PSTViewer Pro\PSTViewerConsole.exe" --e
"PDF - attachments converted/included" "C:\your_file.msg"
```

```
"C:\Program Files\Encryptomatic, LLC\PSTViewer Pro\PSTViewerConsole.exe" --e
"PDF - attachments converted/included" "C:\your_folder_with_messages"
```

Customize export for PST/OST.

To specify extended format please add the next fields to the end of path:

`{1} {2} | {3}`

where:

`{1}` = `::` [begin extended command]

`{2}` = `<internal path inside PST/OST file>` [for example: `\Inbox\John Doe`] | [delimiter]

`{3}` = `T` or `F` [T - export with subfolders (recursively), F - export without subfolders]

All parts are mandatory if `::` is specified after file path.

Example:

Export Inbox folder from pst file (without subfolders):

```
"C:\Program Files\Encryptomatic, LLC\PSTViewer Pro\PSTViewerConsole.exe" --e
"PDF - attachments converted/included" "C:\your_psf_file.pst::\Inbox|F"
```

Export Inbox\NewFolder folder from pst file with subfolders:

```
"C:\Program Files\Encryptomatic, LLC\PSTViewer Pro\PSTViewerConsole.exe" --e
"PDF - attachments converted/included" "C:\your_psf_file.pst::\Inbox
```

`\NewFolder|T"`

c, command

Load command line switches from specified file.

Usage: `PSTViewerConsole.exe --command <file>`

w, nobrowse

Disable messages loading at startup.

Usage: `PSTViewerConsole.exe --nobrowse`

r, runprofile

Choose profile with GUI layout.

Usage: `PSTViewerConsole.exe --runprofile <profile name>`

l, log

Turn on the log file.

Usage: `PSTViewerConsole.exe --log <file>`

i, printer

Specify default printer.

Usage: `PSTViewerConsole.exe --printer <name>`

k, key

Register the application with specified serial key for current user. Key will be applied during next start of application.

Usage: `PSTViewerConsole.exe --key <serial key>`

m, mkey

Register the application with specified master key for local machine. Key will be applied during start of unregistered application. Administrative privileges are required for this command.

Usage: `PSTViewerConsole.exe --mkey <serial key>`

delkey

Erase serial key for current user.

Usage: `PSTViewerConsole.exe --delkey`

delmkey

Erase master key for local machine. It will not influence already registered copies, but for new users the application will be unregistered.

Usage: `PSTViewerConsole.exe --delmkey`

g, gui or GUIFLAGS

Configure visibility of GUI elements.

Usage:

`PSTViewerConsole.exe --gui <element1,element2[,...]>`

or

`PSTViewer.Setup-5.x.x.xxxx.exe GUIFLAGS="<element1,element2[,...]>`

PSTViewer GUI elements:

- MLP - Mail list panel

- FEP - File explorer panel
- FTP - Favorites tree panel
- TBR - Toolbar
- MMP - Main menu panel
- SCH - Search elements
- CMZ - Customize GUI elements dialog
- NUP - Remove 'Check for updates' and 'Update settings' options from the Help menu.

Toolbar buttons:

- OPF - Open file
- REP - Reply message
- FWD - Forward messages
- PRN - Print messages
- EXP - Export messages

UPDATE_POLICY

Choose update policy. It can be found in Help menu.

Usage: `UPDATE_POLICY="Never" | "Ask" | "Auto"`

Options for update policy:

- Never - Set 'Do not check for updates automatically' options in 'Updates Options' dialog;
- Ask - Set 'Check and prompt me to download and install the updates' options in 'Updates Options' dialog. This option is set by default;
- Auto - Set 'Check and automatically download and install' options in 'Updates Options' dialog.

GUILANG

Set the language for PSTViewer Pro interface.

Usage: `GUILANG="<language>"`

The list of languages that PSTViewer Pro supports:

- 1 Chinese.zh-CN
- 2 Chinese.zh-TW
- 3 English.en-US
- 4 French.fr-FR
- 5 German.de-DE
- 6 Italian.it-IT
- 7 Polish.pl-PL
- 8 Portuguese.pt-PT
- 9 Russian.ru-RU
- 10 Spanish.es-ES

`/exelang`

Set the language for installation process.

Usage: `/exelang <LangId>`

The table with different <LangId> can be found here:

<http://msdn.microsoft.com/en-us/global/bb964664.aspx>

Example (to install French version):

`PSTViewer.Setup.exe /exelang 1036`

<file_extension>_ASSOC

Associate PSTViewer with msg, eml, pst or/and ost files.

Usage:

- `EML_ASSOC="1"` - associate PSTViewer Pro with eml files;

- `MSG_ASSOC="1"` - associate PSTViewer Pro with msg files;
- `PST_ASSOC="1"` - associate PSTViewer Pro with pst files;
- `OST_ASSOC="1"` - associate PSTViewer Pro with ost files;
- `ALL_ASSOC=1` - associate PSTViewer Pro with msg, eml, pst and ost files.

Usage:

```
msiexec /i PSTViewer.Setup-5.x.x.xxxx.msi /qn PIDKEY="xxxxxxxx-xxxx-xxxx-xxxx-xxxxxxxx" GUILANG="French.fr-FR" GUIFLAGS="FWD,REP,FTP" ALL_ASSOC=1
```

or

```
PSTViewer.Setup-5.x.x.xxxx.exe /qn PST_ASSOC="1" MSG_ASSOC="1" GUIFLAGS="FWD,REP,FTP,NUP"
```

Links

[User interface tweaks](#)

[User interface](#)

Mail actions

Mail action is an operation that can be performed on messages or message groups. Some actions can be performed on single messages only and some - on several messages.

Any actions that take time to perform can be stopped by pressing **Stop** button on the **Toolbar**.

Mail actions include:

- Opening
- Replying
- Forwarding
- Printing
- Exporting
- Saving
- Deleting
- Enumerating messages in folders

Opening. Opens message in default email client action.

Replying. An action of replying consists of creating a message following selected message in a default email client. Sender of original message will be recipient of the new one.

Forwarding. An action of forwarding consists of creating a message in a default email client, containing the copy of the original message to allow to forward it to different recipient.

Printing. An action of printing messages. Printing scale, paper size, background color, watermarks and other options can be customized in **Print preview** window. Check [Print preview](#) article for more information.

Saving. An action of saving a copy of selected message in specified folder. File name may be taken from source message or specified directly.

Deleting. An action of deleting of selected messages. Messages inside containers (PST files) cannot be deleted.

Exporting. An action which consists of saving selected message or messages to one of file formats according to specified export profile settings. See [Mail exporting](#) article for more details.

Enumerating. An action of retrieving a list of messages located in specified folder and (optionally) its subfolders. See [Mail enumerating](#) article for more details.

Links

[Mail enumeration](#)

[Mail exporting](#)

[Main menu](#)

[Toolbar](#)

[Mail list](#)

Mail enumeration

Mail enumeration is an action of retrieving a list of messages located in specified folder and (optionally) its subfolders. A result of enumeration is a **Mail list** filled with information about messages in current location.

Enumeration is automatically triggered when user selects a folder in **Explorer tree** or **Favorites trees**. It can be manually triggered by selecting **Refresh** in **Explorer tree** context menu or **Browse** or **Browse with subfolders** in **Favorites tree** context menu. In case of "with subfolders" option was selected, enumeration will be performed in specified folder and recursively in all of its subfolders. Automatically triggered enumeration will be performed recursively if **Switch to scan with subfolders** in Explorer tree context menu is checked.

The length of the process of enumeration depends on the number of messages in the folder. If the process takes a noticeable amount of time, its progress will be displayed in status bar. The displayed information include progress bar with status of the process, estimated completion time and estimated number of messages found. Please note, that during the enumeration of PST files, we cannot precisely pinpoint the amount of messages inside, until the reading of file is complete. So, estimated amount of messages can differ from exact number after the reading is complete.

Links

[Mail actions](#)

[Explorer tree](#)

[Favorites tree](#)

[Mail list](#)

Mail exporting

Mail exporting is an action, which consists of saving selected message or messages to one of file formats according to specified export profile settings.

Exporting is done according to export profiles. Export profiles store all the settings needed for message exporting. For example, they store information about format the export will be done to, destination folder, file names generation and lots of others. You can have several export profiles and quickly switch between them without having to set up all the options from a scratch.

There can be many export profiles, but only one could be active. Export is always done according to rules and settings defined in the active export profile.

If you have export profiles already set, exporting messages can be performed simply by selecting messages you want to export, pressing export button and selecting **Start** in **Export Manager** dialog.

Supported export formats

- PDF - Portable Document Format, created by Adobe Systems for document exchange. PDF is used for representing two-dimensional documents in a manner independent of the application software, hardware, and operating system.
- HTML - Hypertext markup language file; can be opened by any web browser, such as Microsoft Internet Explorer or Mozilla Firefox.
- MHT - Web archive MHTML file; supported by Microsoft Word, Internet Explorer or Opera.
- TXT - Plain text file format; can be opened and edited by any text editor.
- PNG - Portable Network Graphics, a bitmap image format that employs lossless data compression.
- JPG - A commonly used method of compression for photographic images.
- GIF - A bitmap image file format.
- TIFF - A file format for storing images, including photographs and line art.
- CSV - A file format used for the storage of data structured in a table with comma-separated values.
- Source format - Export message in the same format as source message was stored in.
- Only attachments - Do not export message body, only attachments.

Export tools



Export tools panel allows user to select active export profile for export and to create, modify and delete export profiles.

New profile button launches **New export profile setup** wizard that allows user to generate new export profile in two steps.

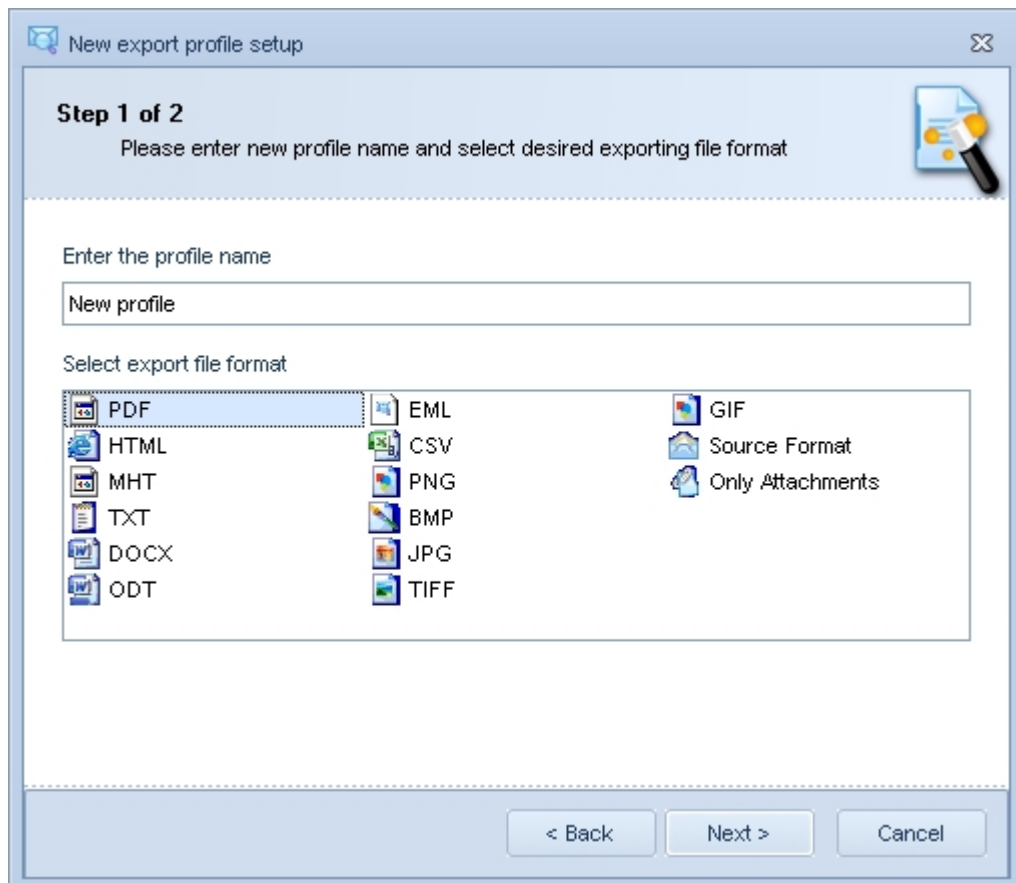
Edit profile button opens **Export profile editor** dialog which can be used to modify settings of active profile.

Delete profile button deletes active export profile. A confirmation for deletion will be asked.

After pressing **Start** button, the export of the messages will be started according to settings of active profile, selected in **Export Profiles** drop-down list.

Pressing **Cancel** button will close **Export manager** dialog without starting the process of export.

New export profile setup wizard



New export profile setup wizard provides a fast a simple way of generating new export profiles. On the first step user is prompted to specify export profile name and export format. On second step storage of output files can be specified - folder or zip file. If folder or file name are defined, they will be used in export profile. If not - they will be asked during export. Pressing **Finish** button concludes export profile generation. More advanced profile settings can be changed by selecting created profile in **Export manager** dialog and pressing **Edit profile** button.

Export profile editor dialog

Export profile editor dialog is used to modify settings of export profiles. The majority of settings are common for all formats, but there are some format-specific, like page sizes. The detailed explanation of export settings is listed below.

Common settings

Setting name		Possible values	Description
Target	Format	PDF, HTML, MHT, TXT, PNG, JPG, GIF, TIFF, CSV, Source format, Only attachments	File format of the exported messages.
	Attachments	Do not export, As file attachments in subfolder, As file attachments in same folder	Message attachments export type
	Zip target	Checked/Unchecked	Compress each exported item into zip archive
	ZipLevel	None, Low, Medium, High	The level of compression. Higher levels of compression require more time to create

	ZipPasswd		Password for zip file
Grouping	File naming	Same filename as email file, Custom naming schema	Exported items file name
	File naming schema		Setup the advanced file naming schema. See Export file naming schema editor section below.
	Action on empty file name	Ask, Fill with index string	Action for empty generated file name
Repository	Repository for result files	Folder, Zip	Exported item location
	RootFolder		Folder to save items to. Will be prompted if empty.
	ZipFile		Zip file name to save items to. Will be prompted if empty.
	ZipLevel	None, Low, Medium, High	The level of compression. Higher levels of compression require more time to create
	ZipPasswd		Password for zip file
Misc.	OnExistingFile	AddSuffix, Overwrite, Ask	Action for existing files
	StopOnError	Checked/Unchecked	Stop export on error
	CopyFailedTo		Folder to save messages that have failed to be exported. Copying will be skipped if empty.

Format-specific settings

Format	Setting name	Possible values	Description
PDF	PageSize	UserDefined, Letter, A4, A3, Legal, B5, C5, 8x11, B4, A5, Folio, Executive, EnvB4, EnvB5, EnvC6, EnvDL, EnvMonarch, Env9, Env10, Env11	Page size of output PDF file. If UserDefined is selected, page size will be taken from CustomPageWidth and CustomPageHeight properties.
	CustomPageWidth		Page width in points (1/72 inch)
	CustomPageHeight		Page height in points (1/72 inch)
	Orientation	Portrait, Landscape	Use Portrait for pages with height greater than width, otherwise - Landscape.

HTML	Title		HTML document title. (Tag <TITLE>)
PNG BMP JPG TIFF GIF	Scale	1-1000	Scale of image in percents (from 1 to 1000, default 100)
	LockAspectRatio	Checked/Unchecked	Lock the ratio of width to height of the image when resizing
	Height		Height of the destination image in pixels, overrides Scale and LockAspectRatio. Leave empty for default image size.
	Width		Width of the destination image in pixels, overrides Scale and LockAspectRatio. Leave empty for default image size.
JPG	Quality	1-100	Jpeg compression quality in percents (from 1 to 100, default 90)
CSV	Encoding	Ansi, UTF-8, Unicode	Encoding of the contents of CSV file
	Separator	",";";"	Fields separator symbol
	Export body	Checked/Unchecked	Include body as separate field

Attachments

Attachments combo-box contains possible formats for message attachments export.

Value	Description
Don't export	Message attachments will not be exported
As file attachments in subfolder	Message attachments will be saved as separate files in the subfolder of the same directory as message body is
As files attachments in same folder	Message attachments will be saved as separate files in the same directory as message body is
As embedded attachments in document	Message attachments will be embedded to the document as attachments (PDF only)
As converted and included content	Message attachments will be converted to the document format and included as content (PDF only)

Export file schema editor dialog



Export file schema editor dialog can be called when user has selected **Custom naming schema** in File naming option. **Export file schema editor** dialog allows to generate folder tree in output folder and customize output file name using elements with message attributes.

Available elements include:

- From - Name and address of message sender.
- To - List of message recipients. Can be adjusted to CC or BCC.
- Subject - Subject field of message
- Increment - 'Bates Stamp'-style naming convention of files
- Source - Transfer name of email file or email file format (MSG, EML or PST)
- Internal Path - Internal path of the message, for example /Inbox folder in email client
- Sent - Date and time when message was submitted
- Received - Date and time when message was received
- Exported - Date and time of export operation

To add element to current naming schema, drag and drop it to edit box or double click on it. After adding element to naming schema, click on it to select possible customization options for those elements that have them. Drag and drop can be used to change the order of the elements in the naming schema. Any text can be manually added to the edit field to make it a constant part of the custom naming schema.

Use "\" symbol as a separator to define folders.

Links

[Mail actions](#)

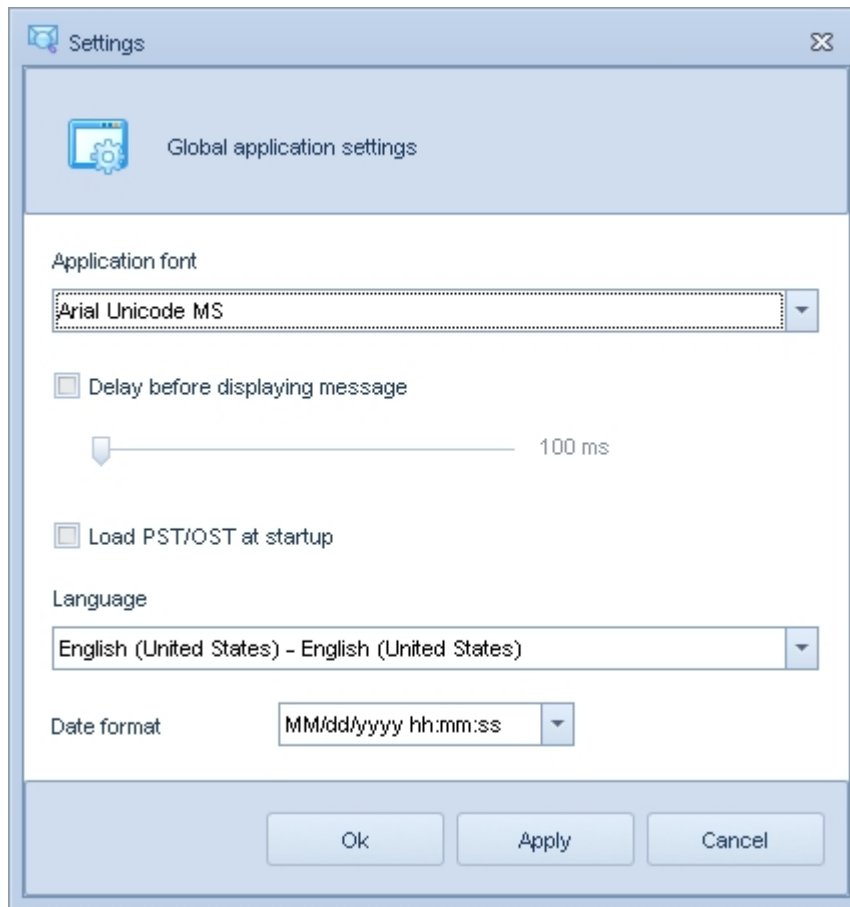
[Mail enumeration](#)

Configuration

Configuration settings are described in this topic, such as:

- Settings - global application settings, such as font, language and date format
- L10NTool.exe - tool, that allows to add and modify language settings
- File associations - PSTViewer Pro can be set as a default application to open MSG, EML, PST and OST files
- Print preview - advanced configuration options for printing files
- Updating and update settings - parameters of automatic updating
- Logging - recording of internal information into the text file

Settings



Settings dialog contains global application settings. It can be called from **Settings** item in the **File** menu.

Application font drop-down list can be used to specify the font that will be used in application as an interface font. It is vital, that an Unicode font is selected for correct display contents of messages with non-english symbols. Arial Unicode MS is set as a default font.

Delay before displaying message options are used to set up optimal response time. This is the delay time after the message was loaded after its selection in **Mail list** and before appearance of its contents in **Message viewer**. Lower values will cause message to appear more quickly, higher values will make navigation through Mail list more smooth.

Possible values - disable, or from 100 to 2000 ms. Default value - 400 ms.

Language drop-down list can be used to change GUI language for PVP. The current version supports the next languages:

- English;
- French;
- German;
- Italian;
- Polish;
- Portuguese;
- Russian;
- Spanish;
- Chinese Traditional;

- Chinese Simplified;
- Arab;
- Ukrainian;
- Norwegian;
- Hindi;
- Filipino.

If you do not see a specific language, you can localize PVP by your own using [L10NTool.exe](#)

Links

[Main menu](#)

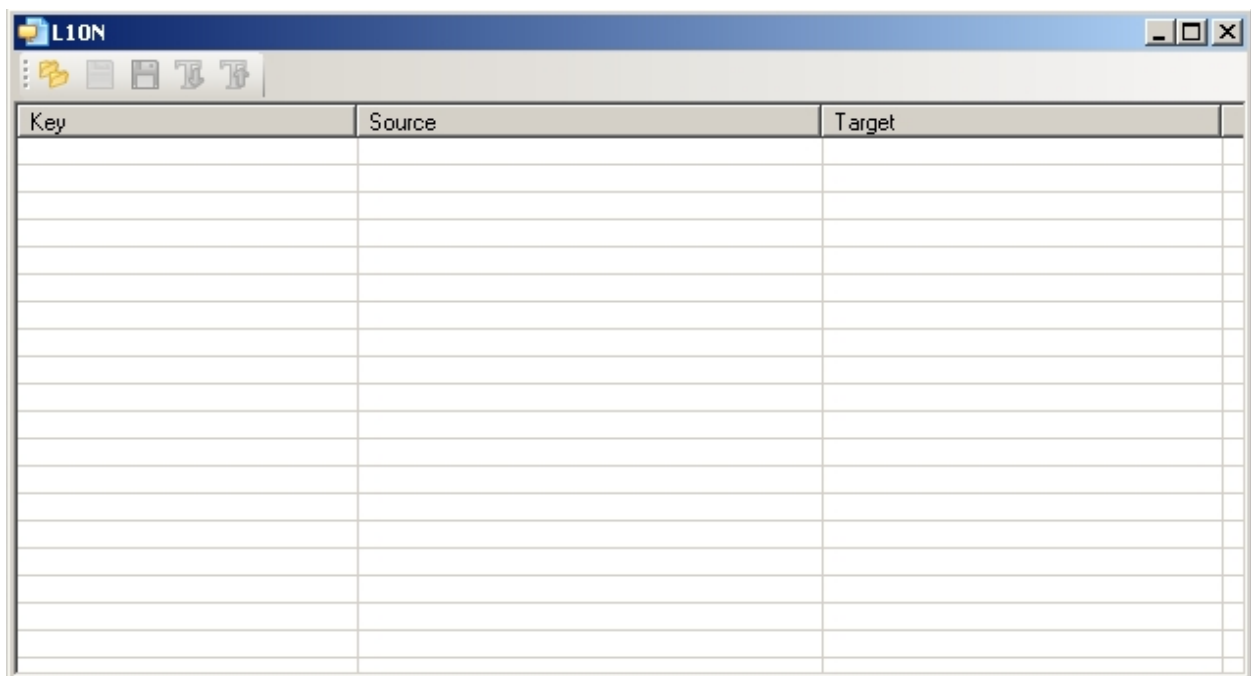
User interface

Mail list

L10NTool.exe

L10NTool.exe

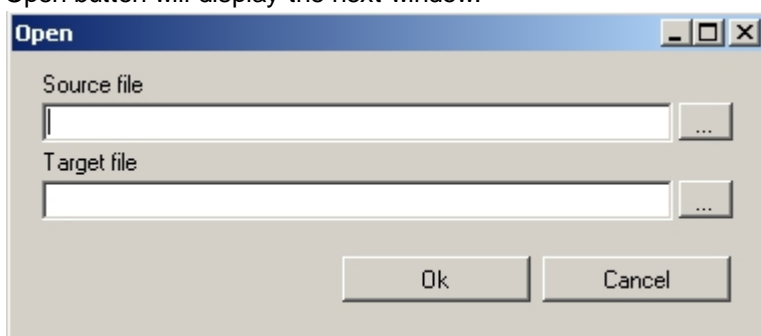
We provide L10NTool.exe with PVP installation (you can find it in PSTViewer Pro folder). After running this tool you will get the next window:



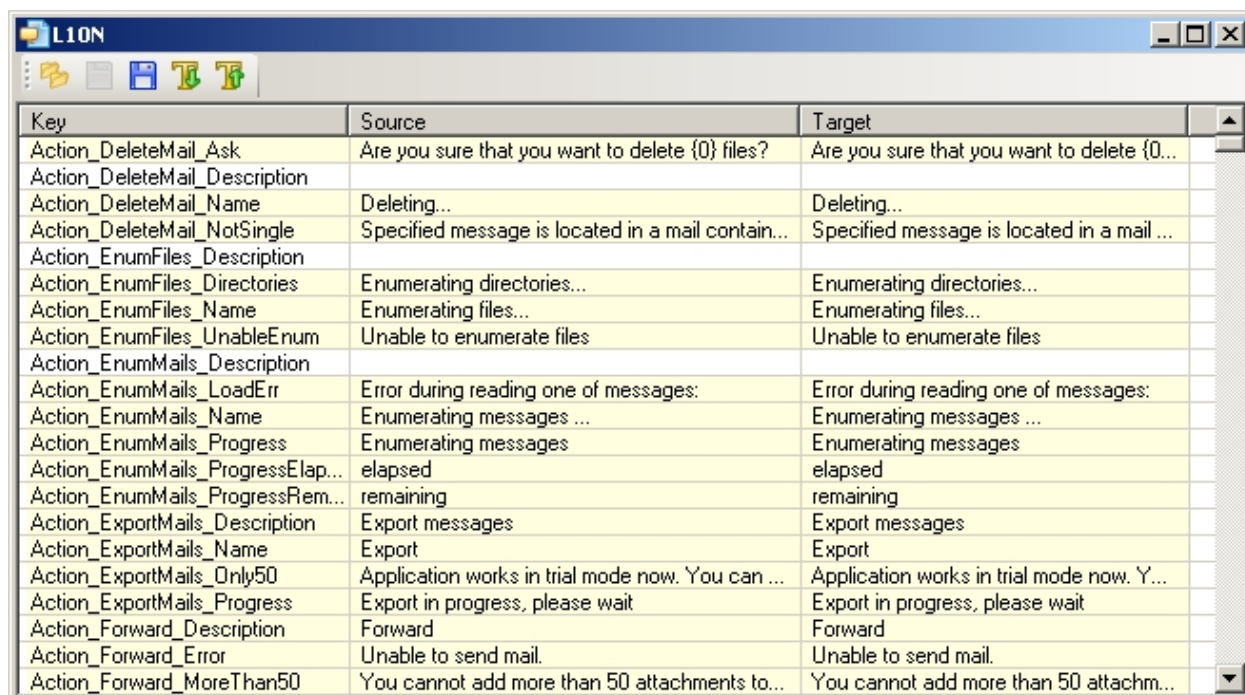
Toolbar

Open button

Open button will display the next window:

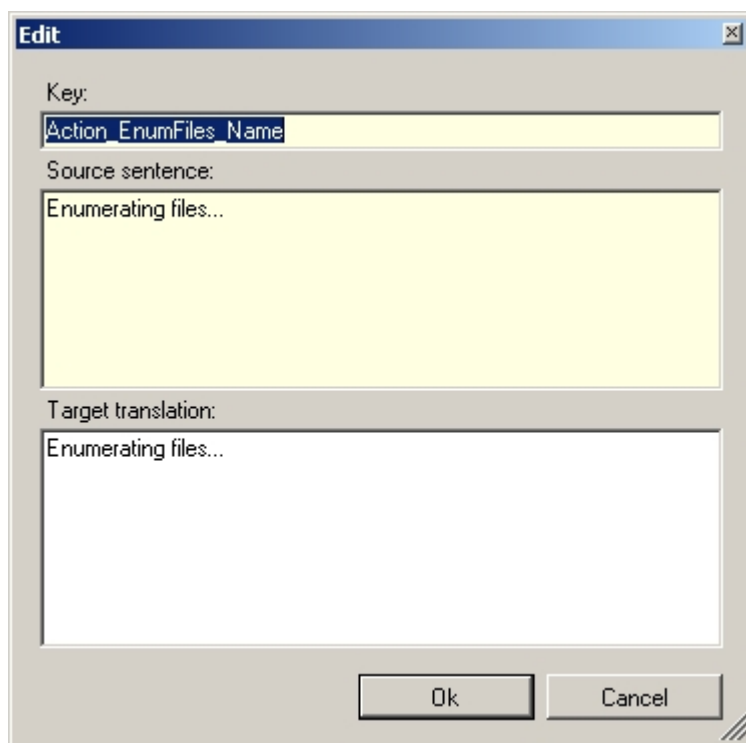


Choose Source file (the file that should be localized) and Target file (the file that will contain localized information). Click Ok button. Now you can easily find the strings that are not localized (they are marked as yellow strings):



Key	Source	Target
Action_DeleteMail_Ask	Are you sure that you want to delete {0} files?	Are you sure that you want to delete {0}...
Action_DeleteMail_Description		
Action_DeleteMail_Name	Deleting...	Deleting...
Action_DeleteMail_NotSingle	Specified message is located in a mail contain...	Specified message is located in a mail ...
Action_EnumFiles_Description		
Action_EnumFiles_Directories	Enumerating directories...	Enumerating directories...
Action_EnumFiles_Name	Enumerating files...	Enumerating files...
Action_EnumFiles_UnableEnum	Unable to enumerate files	Unable to enumerate files
Action_EnumMails_Description		
Action_EnumMails_LoadErr	Error during reading one of messages:	Error during reading one of messages:
Action_EnumMails_Name	Enumerating messages ...	Enumerating messages ...
Action_EnumMails_Progress	Enumerating messages	Enumerating messages
Action_EnumMails_ProgressElap...	elapsed	elapsed
Action_EnumMails_ProgressRem...	remaining	remaining
Action_ExportMails_Description	Export messages	Export messages
Action_ExportMails_Name	Export	Export
Action_ExportMails_Only50	Application works in trial mode now. You can ...	Application works in trial mode now. Y...
Action_ExportMails_Progress	Export in progress, please wait	Export in progress, please wait
Action_Forward_Description	Forward	Forward
Action_Forward_Error	Unable to send mail.	Unable to send mail.
Action_Forward_MoreThan50	You cannot add more than 50 attachments to...	You cannot add more than 50 attachm...

To edit string you can double click on it:



Edit

Key:

Source sentence:

Target translation:

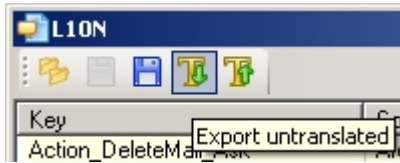
Ok Cancel

Save and Save as...

Allow to save created document.

Export untranslated

You can export all untranslated strings to one file. To do it click Export untranslated button:



Import

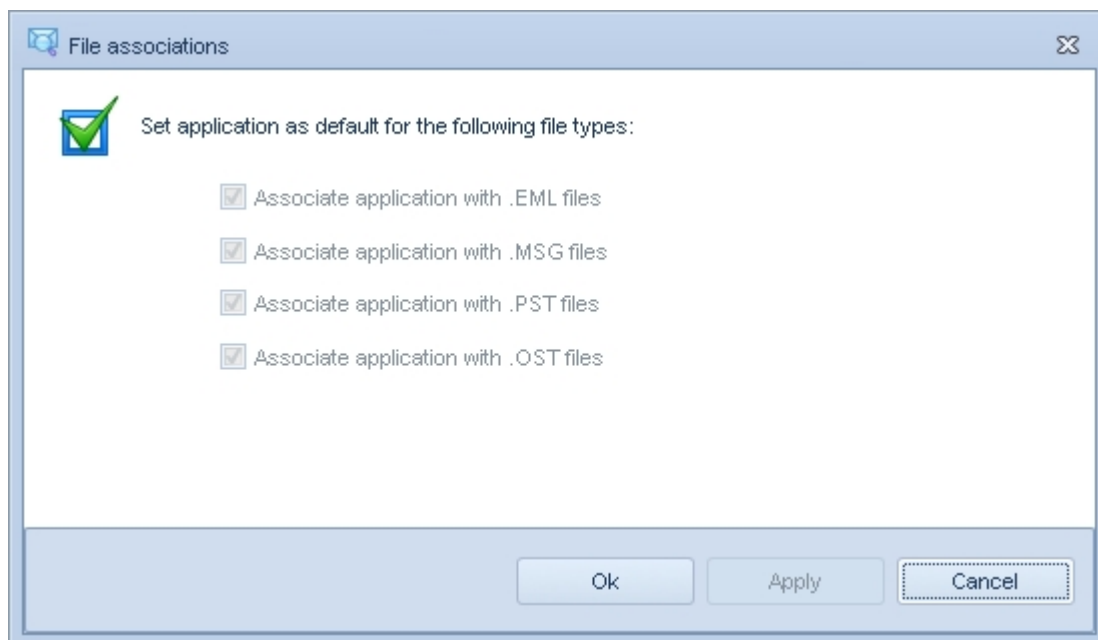
Import option allows to replace the strings in the opened file to strings in a new file:



Links:

[Settings](#)

File associations



File associations dialog contains global application settings. It can be called from **Associations** item in the **File** menu.

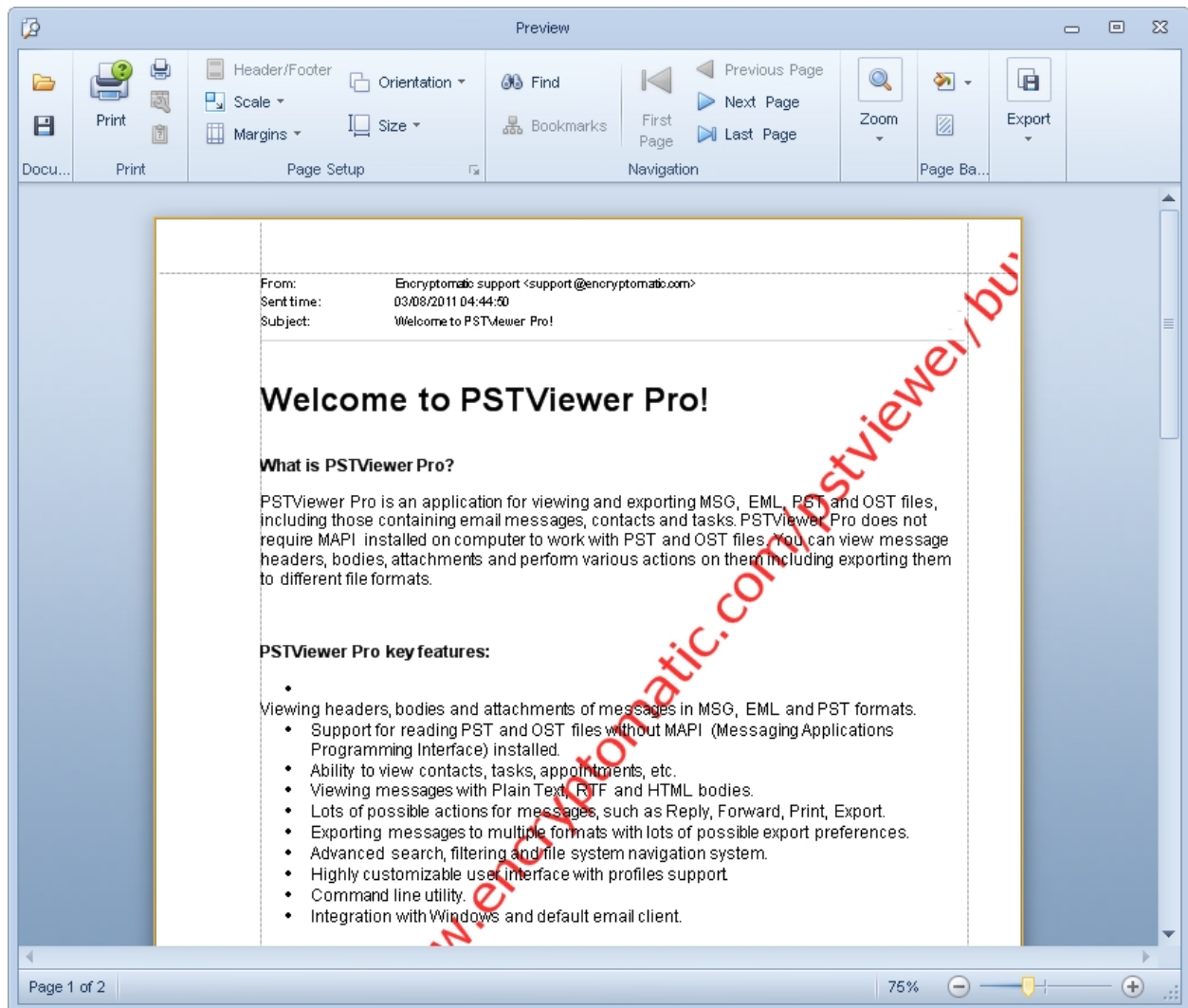
PSTViewer Pro can be set as a default application to open MSG, EML, PST and OST files. File associations can be set using standard Windows file association window.

Please note, that it is impossible to un-associate PSTViewer Pro with file types directly. To do this, you should associate file types in question with different application using Windows file association interface.

Links

[Main menu](#)
[User interface](#)
[Mail list](#)

Print preview



Print preview window provides advanced configuration options for printing files. It can be called from **File** menu.

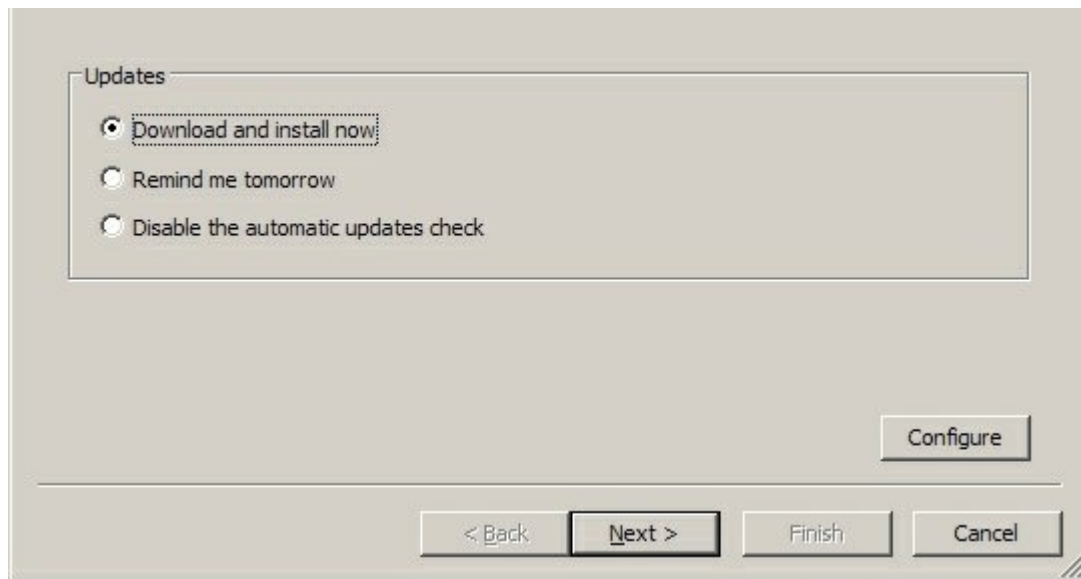
Features:

- Printer selection and preferences
- Printing preview, single- and multi-page. Custom zoom level.
- Saving and loading documents in prnx format
- Margins adjustments
- Setting of background colors
- Adding text or picture as watermark
- Saving document in picture file (BMP, JPG, GIF, PNG, TIFF, WMF, EMF)
- Emailing document in a picture file

Links

[Main menu](#)

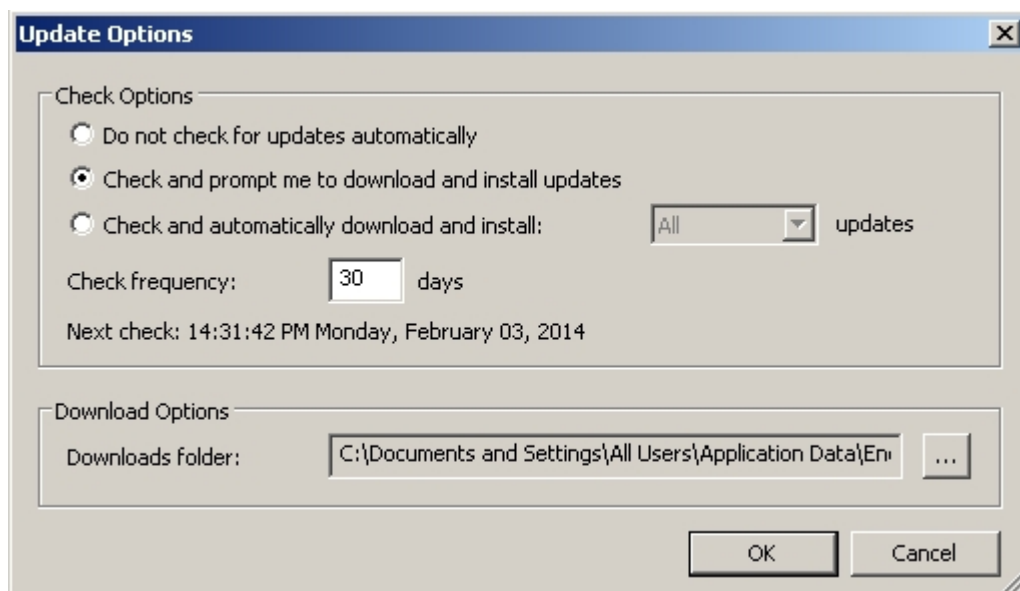
Updating and update settings



PSTViewer Pro has built-in system for checking if newer versions of application is available. User can check for updates either manually, or allow application to do checks for newer versions periodically.

Manual update checks can be performed by pressing **Check for updates** item in **Help** menu. Parameters of automatic updating systems can be set by selecting **Update settings Help** menu item.

Update options dialog



Check frequency group is used to set how frequently the check for updates is performed and if the updates will be installed automatically.

If **Do not check for updates automatically** option is selected, PSTViewer Pro will never check for newer versions automatically.

If **Check and prompt me to download and install the updates** option is selected, application will check for newer version with frequency, specified in **Check frequency** field. If the updates are found, user will be asked if he wants to download and install these updates.

If **Check and automatically download and install** option is selected, PSTViewer Pro will check for newer version with frequency, specified in **Check frequency** field. If the updates are found, they will be downloaded and installed automatically (either all updates or critical only - as specified by user).

Downloads folders field sets the folder, in which temporary update files will be downloaded.

You can also set up update options while installation. Check [Command line parameters](#) article for more information.

Links

[Main menu](#)

[User interface](#)

[Command line parameters](#)

Logging

Logging is recording of internal information into the text file. This file can be later sent to technical support to help resolving problematic situations or report bugs with PSTViewer Pro.

Log contains basic information about user's operation system and internal information about application's settings and performed actions. No personal information is collected.

Logging can be started by selecting **Start logging** item in **Help** menu. User will be asked to specify name and location of the log file. After this, PSTViewer will log its activity until the application will be closed.

Generated log file can be opened by selecting **Open log file** item in **Help** menu. The log file will be opened in default text editor.

Links

[Main menu](#)

[User interface](#)

Enterprise deployment

Enterprise deployment topic describes Deployment, Registration and Command line switches.

- Deployment - details about Installation Package
- Registration - information about PSTViewer Pro registration
- Command line switches - switches for .MSI Installer Package

Deployment

PSTViewer Pro installation is distributed as .EXE executable and as .MSI Windows Installer Package.

Executable version of installation is able to check if required components for PVP deployment are installed in the system. If these dependencies are not installed, executable version will download and install them.

Installer Package version of installation is unable to download and install dependencies, but can be used in remote software deployment systems. Please make sure, your PC meets minimum software requirements before installing this version.

Links

[Registration](#)

[Command line switches](#)

Registration

This topic covers the aspects of PSTViewer Pro registration.

There are two different versions of PSTViewer Pro available - with and without copy protection system:

- Protected version of PVP require registration key to unlock full functionality. The software can be evaluated with certain limitations without registering. The methods of registering application are described below.
- Unprotected versions of PVP have NoLP as part of their installation file names. They can be installed and used with full functionality for unlimited period of time without requiring input of the registration key.

All information below describes version of PSTViewer Pro with copy protection.

Trial limitations

Without key PSTViewer Pro has 15 days of free trial with a number of exported messages limited to 50 per export. After inputting a valid key these limitations are lifted.

Activation statuses

The activation status of current copy of PSTViewer Pro can be seen in Help - Registration. These statuses include:

- Active trial version. User may evaluate PSTViewer Pro with trial limitations.
- Expired trial version. The trial period has expired, user must input registration key to continue using PSTViewer Pro.
- Fully functional version. A valid registration key has been inputted. User may use PSTViewer Pro without any limitations.

Methods of registration

1. Registration via command line.

You can register PVP via command line interface that can be accessed via PSTViewerConsole.exe file, located in the same directory as PSTViewer.exe.

The next options are available for registration:

k, key

Register the application with specified serial key for current user. Key will be applied during next start of application.

Usage: `PSTViewerConsole.exe --key <serial key>`

delkey

Erase serial key for current user.

Usage: `PSTViewerConsole.exe --delkey`

2. Registration via Registration window.

PSTViewer Pro can be registered manually via Help - Registration window. Write the key in Serial key field and press Ok button. The registration procedure will be performed and if the key has been validated successfully, the activation will be completed. You may require the internet connection to perform the activation depending on your key type.

3. Registration while installation process.

You can register PSTViewer Pro for all users while installation process. The next option is available for such registration:

`PIDKEY=<license_key>`

Usage:

`PSTViewer.Setup-5.x.x.xxxx.exe PIDKEY="xxxxxxxx-xxxx-xxxx-xxxx-xxxxxxxx"`

or

`msiexec /i PSTViewer.Setup-5.x.x.xxxx.msi /qn PIDKEY="xxxxxxxx-xxxx-xxxx-xxxx-xxxxxxxx"`

where xxxxxxxx-xxxx-xxxx-xxxx-xxxxxxxx is your license key.

Links

[Deployment](#)

[Command line switches](#)

[Command line parameters](#)

Command line switches

PSTViewer Pro installation files support all msiexec command-line options. For importing profiles via command line, please see Profile deployment topic.

`msiexec /Option <Required Parameter> [Optional Parameter]`

Install Options

`</package | /i> <Product.msi>`

Installs or configures a product

`/a <Product.msi>`

Administrative install - Installs a product on the network

`/j<u|m> <Product.msi> [/t <Transform List>] [/g <Language ID>]`

Advertises a product - m to all users, u to current user

`</uninstall | /x> <Product.msi | ProductCode>`

Uninstalls the product

Display Options

`/quiet`

Quiet mode, no user interaction

`/passive`

Unattended mode - progress bar only

`/q[n|b|r|f]`

Sets user interface level

n - No UI

b - Basic UI

r - Reduced UI

f - Full UI (default)

`/help`

Help information

Restart Options

`/norestart`

Do not restart after the installation is complete

`/promptrestart`

Prompts the user for restart if necessary

`/forcerestart`

Always restart the computer after installation

Logging Options

`/l[i|w|e|a|r|u|c|m|o|p|v|x|+|!]* <LogFile>`

i - Status messages

w - Nonfatal warnings

e - All error messages

- a - Start up of actions
- r - Action-specific records
- u - User requests
- c - Initial UI parameters
- m - Out-of-memory or fatal exit information
- o - Out-of-disk-space messages
- p - Terminal properties
- v - Verbose output
- x - Extra debugging information
- + - Append to existing log file
- ! - Flush each line to the log
- * - Log all information, except for v and x options

/log <LogFile>

Equivalent of /!* <LogFile>

Update Options

/update <Update1.msp>[;Update2.msp]

Applies update(s)

/uninstall <PatchCodeGuid>[;Update2.msp] /package <Product.msi | ProductCode>

Remove update(s) for a product

Repair Options

/f[p|e|c|m|s|o|d|a|u|v] <Product.msi | ProductCode>

Repairs a product

- p - only if file is missing
- o - if file is missing or an older version is installed (default)
- e - if file is missing or an equal or older version is installed
- d - if file is missing or a different version is installed
- c - if file is missing or checksum does not match the calculated value
- a - forces all files to be reinstalled
- u - all required user-specific registry entries (default)

m - all required computer-specific registry entries (default)

s - all existing shortcuts (default)

v - runs from source and recaches local package

Setting Public Properties

[PROPERTY=PropertyValue]

Consult the Windows ® Installer SDK for additional documentation on the command line syntax.

Links

[Deployment](#)

[Registration](#)

Transferring activation

Transferring activation topic describes how to release license activation in order to activate it again for another user.

- Releasing license activation - how to release license activation in order to activate it again for another user.

Releasing license activation

Releasing license activation using graphical interface

This option is available after successful PstViewer Pro registration and is used in order to transfer PstViewer Pro activation to another user.

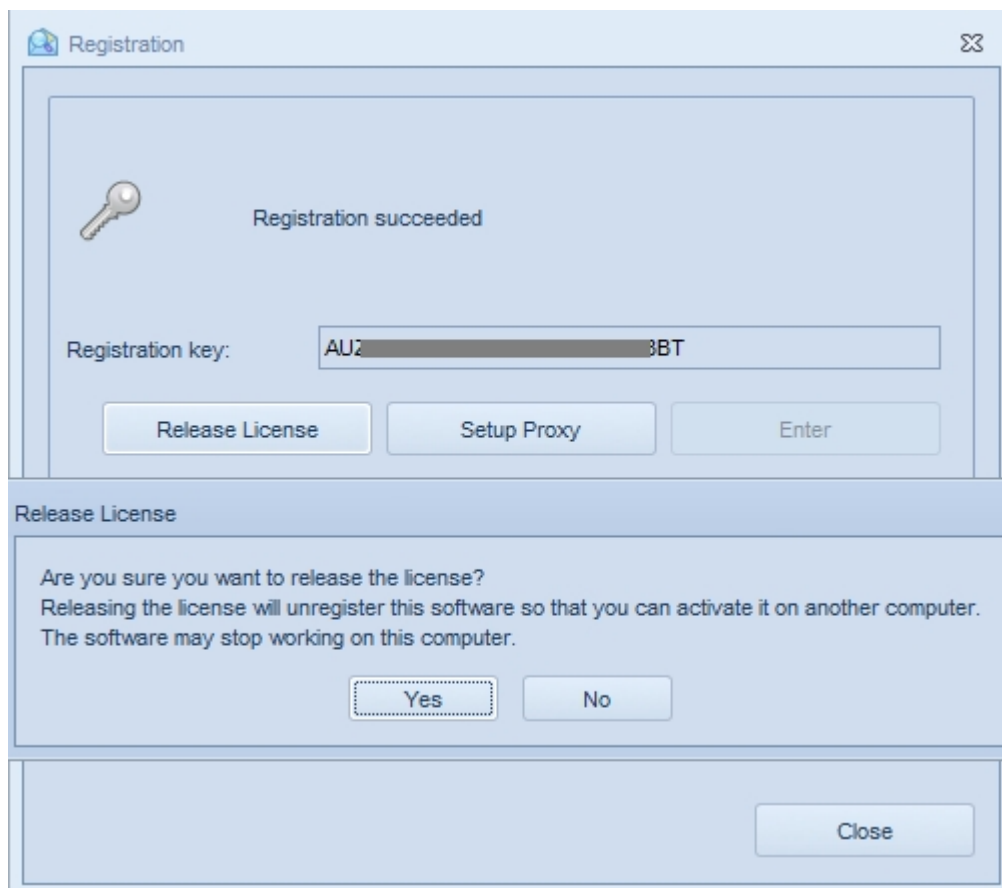
If you are changing computer or operational system, please release PstViewer Pro activation first.

To release activation for PstViewer Pro:

- Switch to "Help" tab;
- Click "Registration" button;

You will be prompted for confirmation about license release ("Are you sure you want to release the license? Releasing the license will unregister this software so that you can activate it on another computer. The software may stop working on this computer");

- Click "Yes".



Releasing license activation from command line

Command line interface of PSTViewer Pro can be accessed via PSTViewerConsole.exe file, located in the same directory as PSTViewer.exe.

Usage: `PSTViewerConsole.exe [options]`

`delkey`

Erase serial key for current user.

Usage: `PSTViewerConsole.exe --delkey`

Links

[Registration](#)

[Deployment](#)

[Command line switches](#)

[Command line parameters](#)