

# Firmware 2.12.7 & Monitoring App 2.3.0

## MoRoS 2.0 & 2.1 / MLR 2.0 / RSM

---

### General information:

The update package contains the following files:

- system\_MoRoS\_2.12.7 always necessary
- data\_MoRoS\_2.12.7 always necessary
- Monitoring\_2.3.0 only necessary if Monitoring App is used with MoRoS 2.1

On the last page you'll find the update process and the checksums for the files!

- Additional information for Monitoring App on our web site: <http://www.insys-icom.com/Monitoring-App>
- The latest manuals are available on our web site: <http://www.insys-icom.com/icom/en/support-downloads>

### Intended use for INSYS products:

- All MoRoS 2.0 devices
- All MoRoS 2.1 devices (usage of Monitoring App possible)
- All MLR 2.0 devices
- All RSM devices

### Important notes:

- If your device has a previous firmware version of at least **1.x.x** this update **cannot** be used!
- If your device has a previous firmware version of at least **2.0.0** but before 2.3.0, an intermediate update step to 2.2.1, and then an intermediate update step to 2.6.2 must be performed before.
- If your device has a previous firmware version of at least **2.3.0** but before **2.6.0**, an intermediate update step to 2.6.2 must be performed before.
- These updates are available from the INSYS support department.
- Only for Monitoring App:
  - It's an optional update for MoRoS 2.1 devices with firmware version of at least **2.11.0**
  - After standard installation no licenses for the functions Logo, Modbus, S7 are included.
  - Licenses can be ordered at INSYS icom sales department

### Preconditions:

- Make sure nobody else is working on the web interface too!
- The power supply must not fail or be switched off in any case!
- We recommend to save the configuration first (Download page).

### Latest Release Notes:

Since version 2.12.6 (Part 1)

#### Functional Enhancements:

- WLAN (EBW-W100/EBW-WH100): new access point functionality
- LAN (ext) for EBW routers: new function LAN (ext)
- E-mail: new attachment available: ASCII configuration file
- OpenVPN: latest version 2.3.8 implemented
- OpenVPN: additional Hash algorithms (SHA-224, SHA-256, SHA-384, SHA-512) configurable
- SIM card: status display in web interface if SIM card is not present or cannot be accessed
- Serial Ethernet: optional automatic connection closure after configurable maximum time
- Serial Ethernet: DTR line is supported for MoRoS device family
- Automatic update: download cancellation (HTTP or FTP) if a time of 2 hours is exceeded

#### Further Improvements:

- EBW-L: connection stability for 3G/4G and behaviour with daily logout/login optimised
- EBW-L: immediate use of network limitation (2G/3G/4G) without restart

# Firmware 2.12.7 & Monitoring App 2.3.0

## MoRoS 2.0 & 2.1 / MLR 2.0 / RSM

---

### Latest Release Notes:

#### Since version 2.12.6 (Part 2)

##### **Further Improvements:**

- Serial Ethernet interface MoRoS: functional improvement
- Serial interface IMON-G100/200 and INSYS SDSL: correct function of the DCD and RI lines
- Sandbox for MoRoS and MLR: correct access to serial interface
- EBW/MLR/INSYS SDSL/RSM: I/O binary configuration is ignored or devices without I/O function
- EBW-L: incoming NAT works upon restart
- ASCII text file: port forwarding function will also be taken over if "apply" parameter is missing
- MoRoS ADSL: Communication with ADSL modem optimised

#### Since version 2.12.5

##### **Functional Enhancements:**

- Serial-Ethernet Gateway: Mapping of phone numbers to IP and port specifications possible (contained in AT answer list)
- Serial-Ethernet Gateway: Dialing also possible with ATDT
- Serial-Ethernet Gateway: Connection can optionally be closed with ATZ
- Port forwarding: Rules can be set individually for WAN and OpenVPN (e.g. to allow port forwarding via WAN without restricting VPN access automatically)
- Web interface language: French is supported as menu language (help texts are English)

##### **Further Improvements:**

- OpenVPN server: Client entries of the VPN IP address also possible without network
- SNMP traps: Dispatch of several SNMP traps also with same netfilter violations
- Monitoring App with EBW: SMS forwarding possible
- EBW-L100: PPTP server will be re-activated upon device restart
- EBW-L100: PPTP server does not prevent the daily modem restart anymore
- Firmware update: OpenVPN configuration also works after update from a version before 2.12.4 (does not apply to EBW-L100)

#### Since version 2.12.4

##### **Further Improvements:**

- OpenVPN: "tls-auth" function can still be used after deleting the private key

#### Since version 2.12.3

##### **Functional Enhancements:**

- IPsec: interval for rekeying at IKE SA and IPsec SA separately adjustable
- IPsec: optional selection of protocol for tunneling and port
- Messages: new message when MAC filter violation occurs
- Messages: SNMP for firewall violations now has additional information (source MAC, source and destination IP/port, protocol)
- Messages: SNMP due to incorrect login at the web interface now specifies the user name used
- CLI: Adjustable prompt
- CLI: ADSL status read via CLI
- OpenVPN: expanded number of possible routes up to 300
- Sandbox: character "&" is now supported in the Password

##### **Further Improvements:**

- CLI: Username can be deleted
- OpenVPN: When the function "Exclusive by input2" also a tunnel construction is stopped immediately when input 2 returns to the idle state

# Firmware 2.12.7 & Monitoring App 2.3.0

## MoRoS 2.0 & 2.1 / MLR 2.0 / RSM

---

### Latest Release Notes:

#### Since version 2.12.2

##### **Functional Enhancements:**

- OpenVPN: Certificate-based authentication extended by static key (command `tls-auth`)
- Serial Ethernet gateway: new function Modbus TCP/RTU Gateway for incoming TCP connections (Modbus TCP slave – RS232/RS485)
- Web interface: Input of the character "&" in all text fields supported, e.g. for passwords
- CLI: Faster login possible; prerequisite: SSH client supports Elliptic Curve Diffie-Hellman (ECDH) or OpenSSH with at least version 6.5
- CLI: `cli.log` function extended by 3rd optional parameter for specifying the lines to be output
- CLI: Line length extended to 255 characters

##### **Further Improvements:**

- Cellular connection: 2G/3G switch optimised (devices EBW-H and MLR 3G remained in 2G network)
- Serial Ethernet gateway: Erratic tripping of idle timer solved
- DynDNS: rare update problems solved (only relevant with frequent Dial-Out connections in very brief intervals)
- Time synchronisation: Computation optimised; prevents misinterpretation in case of heavy bundling of NTP requests via same Internet Gateway
- Configuration: Display error of the switch port configuration corrected (only effective for MoRoS devices)

#### Since version 2.2.0 of the Monitoring App

##### **Functional Enhancements:**

- Timer function: weekdays added, individually selectable
- Log: not assignable incoming SMS will be logged in monitoring log (in case of unknown phone number or not assignable SMS content)
- Web interface: new language selection French

##### **Further Improvements:**

- Modbus and S7 device monitoring: no automatic check of the elements is initiated upon app start

#### Since version 2.1.0 of the Monitoring App

##### **Functional Enhancements:**

- Actions: transmission of values through the cloud; events, alarms and server feeds can be sent to the cloud (Application: central data acquisition, visualization of parameters in graphs)
- Actions: "Contacts" renamed "Receipients"

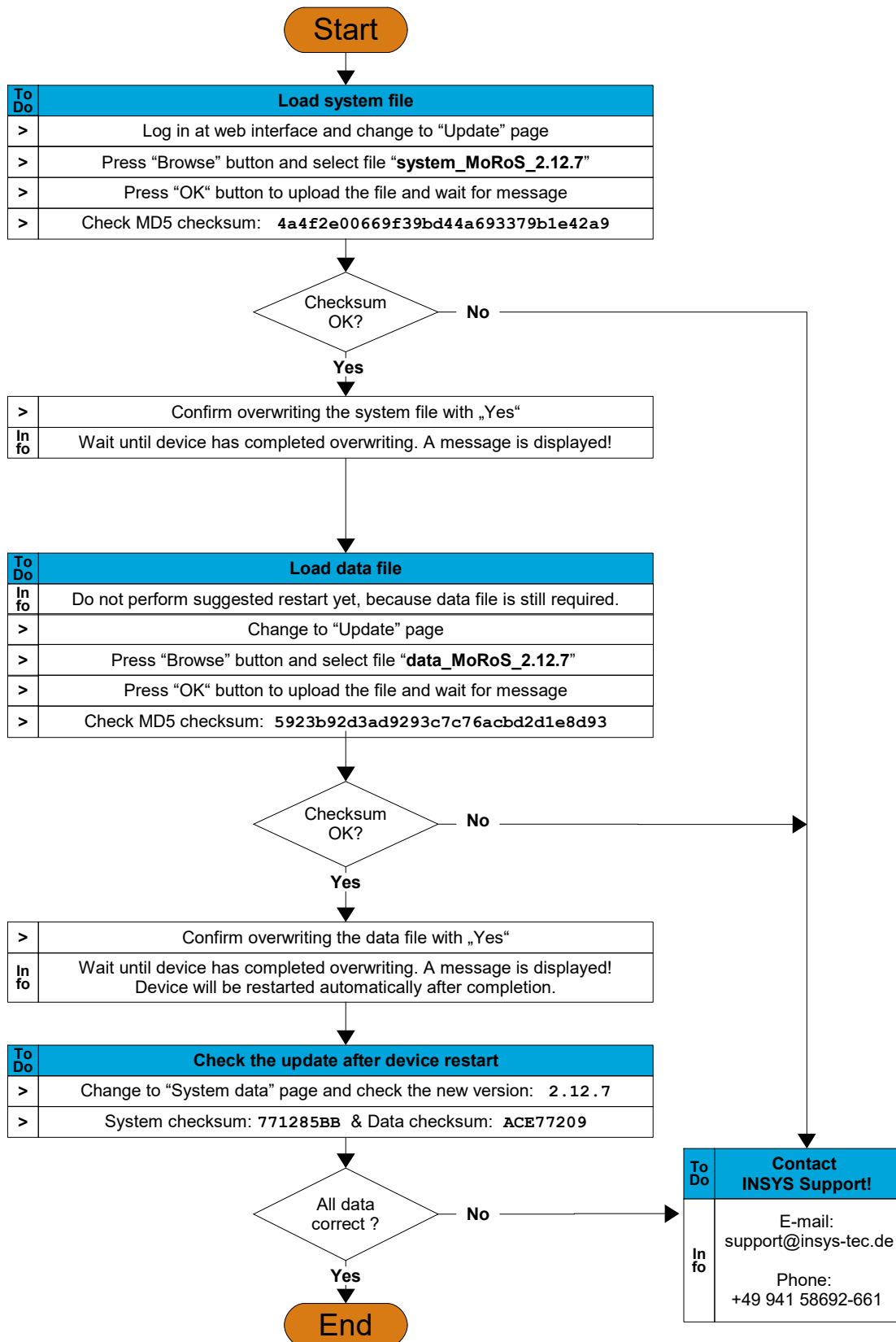
##### **Further Improvements:**

- Fixed display problems with Internet Explorer versions 8 and 9
- Disconnections with Logo 8 fixed (occurred after disconnecting another parallel operation)

Additional information regarding older versions is available from the INSYS support: [support@insys-tec.de](mailto:support@insys-tec.de)

# Update Firmware 2.12.7

## MoRoS 2.0 & 2.1 / MLR 2.0 / RSM



# Update Monitoring App 2.3.0

## MoRoS 2.1

