



Layout Editor

Users Guide

Copyright © 2003-2008 Ken Stahlman. All Rights Reserved.

www.ksoft.net

ken@ksoft.net

FontCat Layout Editor Copyright © 1997 - 2008 Ken Stahlman. All Rights Reserved.

FontCat uses software developed by the following:

Sparkle framework Copyright (c) 2006 Andy Matuschak

Thanks to Brent Simmons, whose RSS reader class was modified and used for appcast support. His class is licensed as follows:

Copyright (c) 2002, Brent Simmons

All rights reserved.

Neither the name of ranchero.com or Brent Simmons nor the names of its contributors may be used to endorse or promote products derived from this software without specific prior written permission.

THIS SOFTWARE IS PROVIDED BY THE COPYRIGHT HOLDERS AND CONTRIBUTORS "AS IS" AND ANY EXPRESS OR IMPLIED WARRANTIES, INCLUDING, BUT NOT LIMITED TO, THE IMPLIED WARRANTIES OF MERCHANTABILITY AND FITNESS FOR A PARTICULAR PURPOSE ARE DISCLAIMED. IN NO EVENT SHALL THE COPYRIGHT OWNER OR CONTRIBUTORS BE LIABLE FOR ANY DIRECT, INDIRECT, INCIDENTAL, SPECIAL, EXEMPLARY, OR CONSEQUENTIAL DAMAGES (INCLUDING, BUT NOT LIMITED TO, PROCUREMENT OF SUBSTITUTE GOODS OR SERVICES; LOSS OF USE, DATA, OR PROFITS; OR BUSINESS INTERRUPTION) HOWEVER CAUSED AND ON ANY THEORY OF LIABILITY, WHETHER IN CONTRACT, STRICT LIABILITY, OR TORT (INCLUDING NEGLIGENCE OR OTHERWISE) ARISING IN ANY WAY OUT OF THE USE OF THIS SOFTWARE, EVEN IF ADVISED OF THE POSSIBILITY OF SUCH DAMAGE.

Omni frameworks software developed by The Omni Group and

Omni Source Code software is available from The Omni Group on their web site at www.omnigroup.com.

Contents

Layouts	3
Main Screen	3
The Tool Palette	4

IN THIS CHAPTER

- What are Layouts
- Layout Fields
- Field Properties
- Example Layouts

Layouts

Layouts are files that can be used in printing your font listings to control the appearance and content of the printout. In the layout editor there are various fields that you will use to control what gets displayed.

In a layout there are several categories of fields you can use.

Shape and other non font listing - this type of field is for adding lines, shapes and images to your layout. In addition you can add page numbers, and a folder reference..

Font Listing - selected face - these fields will print only using the currently selected face from the font listing. These fields can be used to buildup a custom font sample page showing a single face. Some of the fields can display the name of the font, text or an alphabet.

Font Listing - all faces - these fields are used to print out the entire list of fonts. If you have more than 1 of these fields in a layout, only the first one will control the breaks between pages.

The Main Screen

The screen shot below (Figure 1) shows the main screen when you start up the layout editor. It has three main sections to it.

The tool palette.

The layout window.

The inspectors

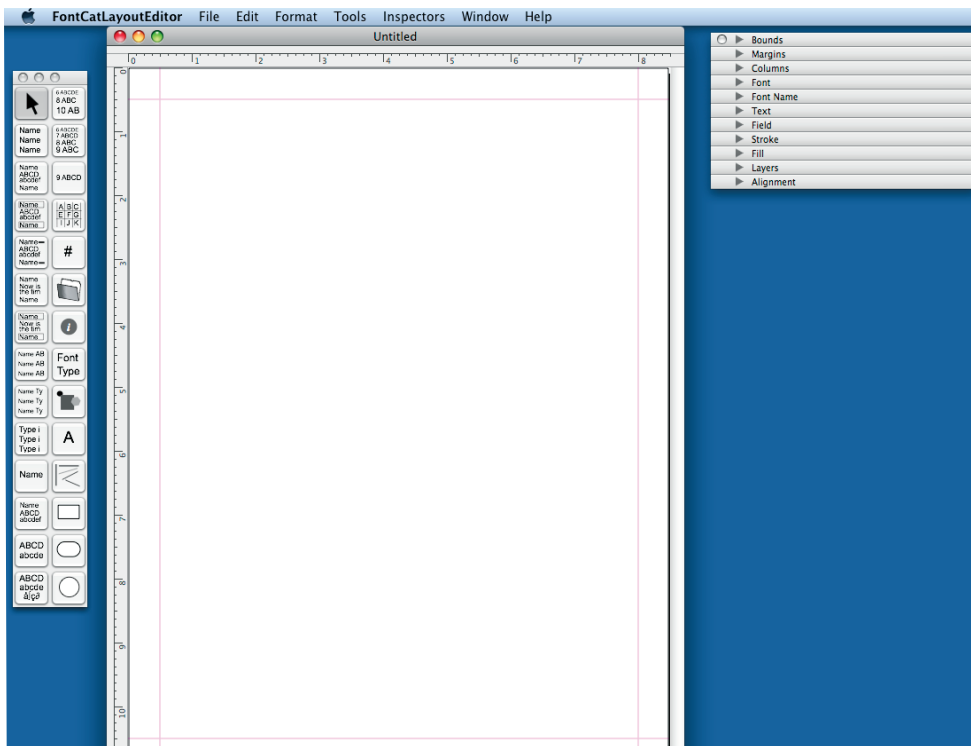


Figure 1-1 Layout Editor main screen

The tool palette

The tool palette consists of the following tools:

The fields available are as follows: *(left side, top to bottom)*

Selection tool - select a field, or hold the mouse down as you drag over fields selecting each one that completely is inside the selection.

Font Listing - print out a listing of all font names for the currently selected font set.

Font Listing With Alphabet - print out a listing of all font names with alphabet for the currently selected font set.

Font Listing With Alphabet Bordered - print out a listing of all font names with alphabet for the currently selected font set with a border around the font name

Font Listing With Alphabet Decorative - print out a listing of all font names with alphabet for the currently selected font set with some decorative lines.

Font Listing with Text Blocks - print out a listing of all font names with text blocks for the currently selected font set.

Font Listing with Text Blocks Bordered - print out a listing of all font names with text blocks for the currently selected font set with a border around the font name.

Font Listing with Alphabet Single Line - print out a listing of all font names with alphabet for the currently selected font set with the alphabet on the same line as the font name, but in a second column.

Font Listing with Text Single Line - print out a listing of all font names with text for the currently selected

font set with the alphabet on the same line as the font name, but in a second column.

Font Listing with Alphabet Single Line - print out a listing of all font names with alphabet for the currently selected font set with the alphabet on the same line as the font name, but in a second column.

Font Listing With Text Block - print out a listing of all font names with a text block for the currently selected font set.

Font Listing With Text Block Bordered - print out a listing of all font names with a text block for the currently selected font set with a border around the font name

Font Name With Alphabet - print out a single font with name and alphabet section

Alphabet - print out a single fonts alphabet section

Alphabet - print out a single fonts alphabet section and other characters in the font created with the option key.

(right side, top to bottom)

Waterfall - print out a single fonts sample in a waterfall style where each line shows a bigger standard font size.

Font Sizes - print out a single fonts sample in a waterfall style where each line shows a bigger size that the user selects the beginning and ending size with each line 1 point larger than the previous.

Size And Sample - print out a single fonts sample with a font and size and sample line. Can be used to construct a custom waterfall style display.

Char Grid - print out a single fonts sample in a grid. You can choose the starting character.

Page Number (# sign) - place one of these on each layout that you want to be sequentially numbered.

Folder - this will print the full pathname where your selected fonts are located.

Font Info - this will print the currently selected fonts information.

Font Type - this will print the currently selected fonts type.

Image - Use this field to import image files of logos or artwork.

Text Tool (T) - use this field to place any text you type in on your layout. You can set the font, size, alignment, leading and style for this text.

Line - draws a line at any angle, horizontally or vertically.

Rectangle - use this field to draw rectangles either filled or unfilled.

Round Rectangle - use this field to draw round rectangles either filled or unfilled.

Oval - use this field to draw ovals either filled or unfilled.