

ESX Manager Version 7.0.0 User Manual

This manual will go over the basic features of the ESXManager software. This manual will go tab by tab in the software and will give a description of what all can be done on that particular tab.

- **Main –**

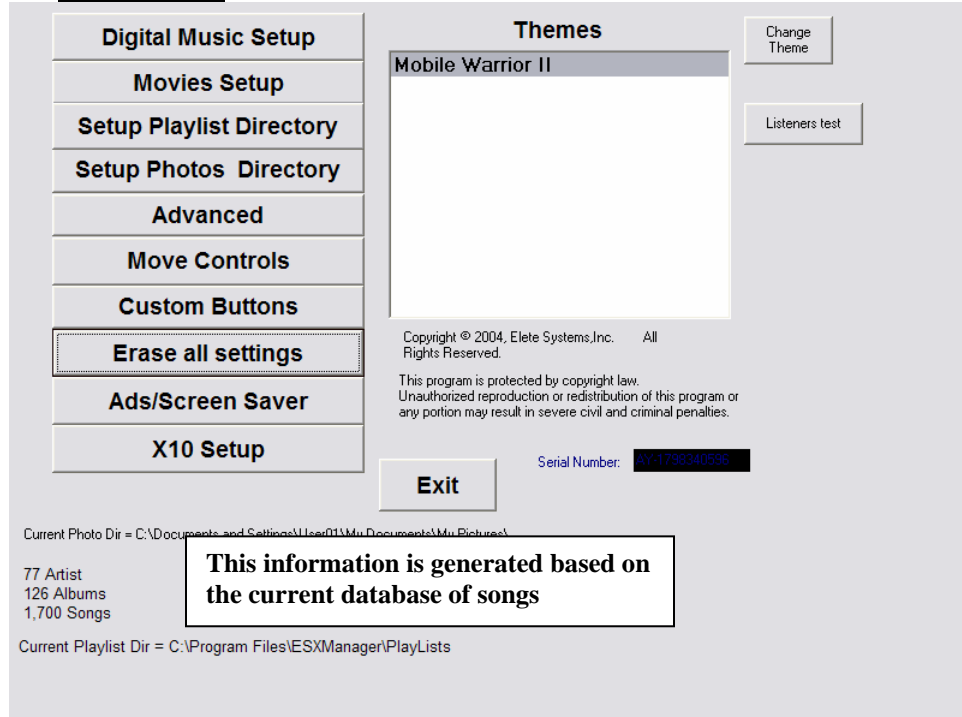


This menu is used for navigation to all other windows programs that you wish to run outside of the ESXManager software without having to go in to windows itself through the function we call custom buttons. The Main Tab is the portal to all setup functions for the ESXManager and is also the portal to get to the windows desktop as well.

- Default Button Configuration

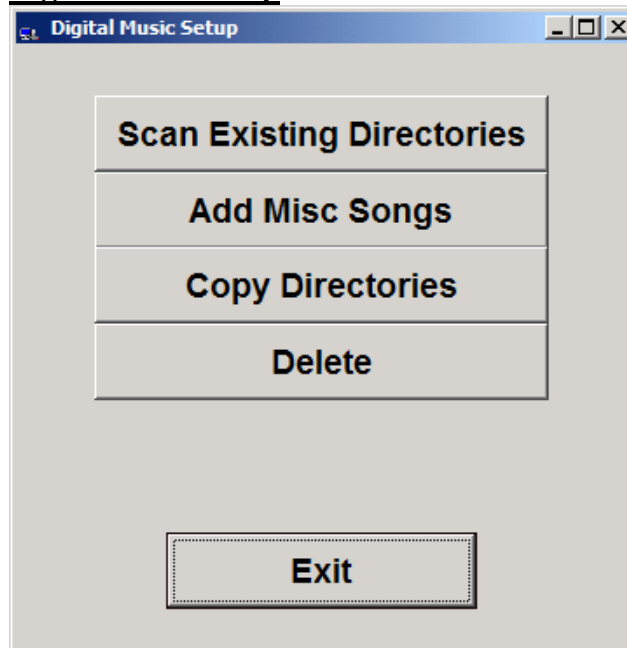
- Exit the software – Exits the ESX Manager Software and leaves you at the Windows Desktop. Double Click on the ESXManager CD Icon on the Desktop to relaunch the application
 - Show Desktop – Functions just like a minimize button and will minimize the ESXManager Software to the Task Bar or the Systray (bottom right icons by the clock) depending on what you set it up to do in the General Setup Menu. (Default is to minimize to the task bar just like any other windows program)

▪ Setup Menu



Allows you to Setup all of the different aspects of the ESXManager software.

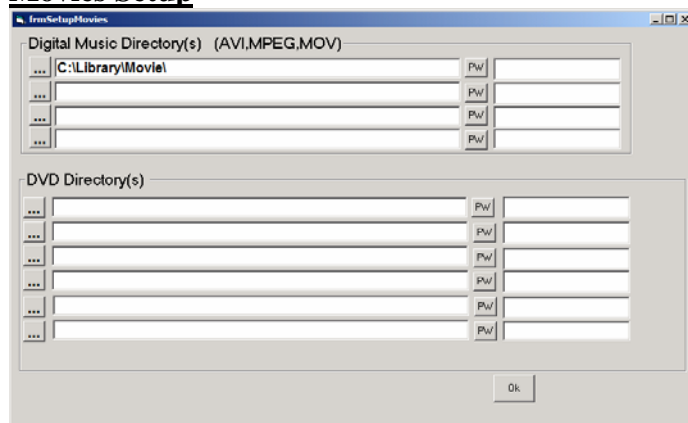
• Digital Music Setup -



Allows you to set up all Digital Music options for MP3 or Wav files you want to play from the Music Tab.

- **Scan Existing Directories** – Allows you to scan individual directories that have your MP3 or Wav files in them. They must be stored in the \artistname\albumname\tracknumber

- songname.mp3 (or .wav) format if you want them to view correctly in the ESXManager Music Player. This function only scans one directory at a time but can scan multiple directories on multiple drives, you just need to scan them one directory at a time. When scanning the songs will be entered into the esxmanager database for future playback from the ESXManager Music Player.
- **Add Misc Songs** – This function allows you to load misc songs that you have in a single directory that are not in the above mentioned folder format. It will create an artist and album name of your choice (ie: Artist = MP3, Album = Misc) in the esxmanager database and then you can point to a directory that just has the music files alone in it. It will then scan that directory as if it were in the correct format for future playback.
- **Copy Directories** – This function allows you to COPY an entire directory structure that IS in the correct format listed above from a CD or external drive source and simultaneously enter them into the esxmanager database in one step. (preventing you from having to exit the esxmanager software and using the Windows explorer to copy the folders over then having to rescan the directory. This function will do it all in one easy step)
- **Delete** – This function allows you to remove songs from the database and your directory structure that you do not want on your system anymore. **WARNING !!!** – Using this function WILL DELETE the music files selected from the systems Hard Drive and will not be recoverable, even from the recycle bin!!!
- **Movies Setup** –



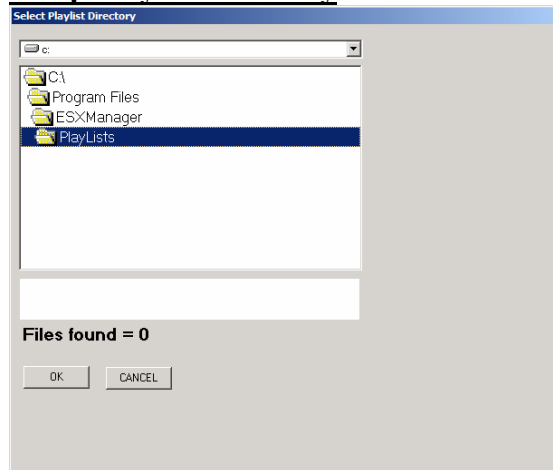
Allows you to set up the file locations and passwords for all of your movie options to play back from the Movies Tab

- **Digital Movie Directory (s)** – This function allows you to type in multiple directories to scan for digital movies or

music videos. These can be in the AVI(divx), AVI(windows), MPEG/MPG, or MOV video formats. These directories are refreshed in the esxmanager database every time you click on the Movies Tab and select the Digital button located on the screen.

- **DVD Directory (s)** – This function allows you to enter the directories where you have .VOB files stored (these files are a raw rip of a DVD that function just like a DVD menus and all. Utilities like DVD Shrink and DVD Ripper create these type of files) and will display on the Movies Tab when you click on the VOB button.
- **PW** – This allows you to enter a password to view the movies in the associated folder before they can be viewed on the Movies tab. This comes in handy for rated R, X, or XXX movies to be loaded but not viewed unless desired by the appropriate users of the system. A blank field will allow all movies the corresponding directory to be viewed on the Movies Tab. By typing in a word into the corresponding field, then every time you go to the Movies tab, you must enter that “password” to allow those movies in the corresponding folder to be displayed.

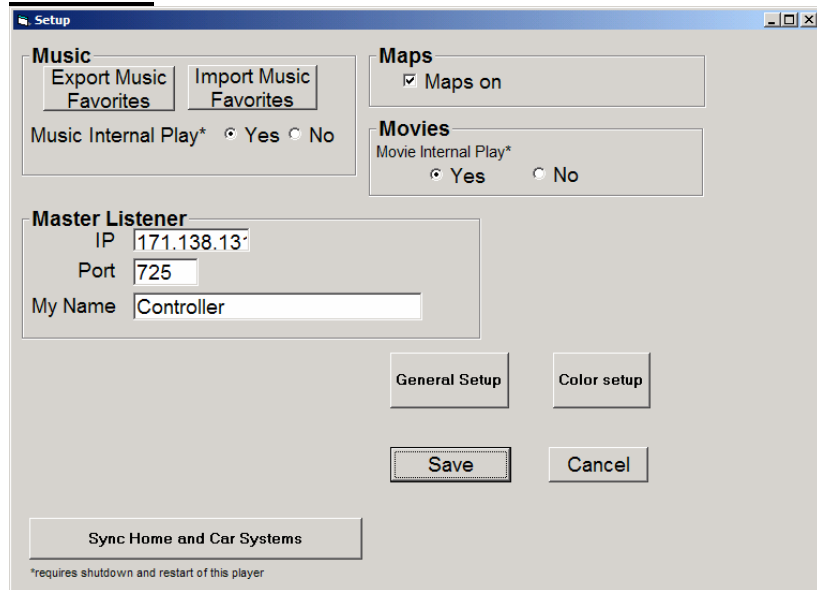
- **Setup Playlist Directory** –



Allows you to set the directory in which your Playlists are stored. The default directory is c:\program files\esxmanager\playlists.

- **Setup Photos Directory** - Allows you to set the directory in which all of your picture folders are saved to. The default directory is c:\Photos. All photos must be stored within folders under this root directory for them to display properly.

- **Advanced –**

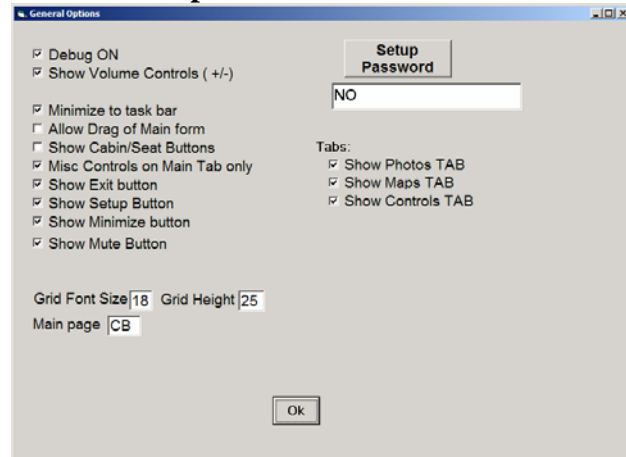


Allows you to change tab mouse, colors, and other functions within each individual menu Tab.

- **Music** – This function area allows you to select the use of a ESX Listener to control another computers audio card over IP when playing the selected songs. This Listener is sold separately and has a separate manual when purchased. Please contact us at www.12vsystems.com for more information.
 - **Export Music Favorites** – this will export your Favororites list that is created and used in the ESXManager Music Tab to a winamp compatible Playlist (so that you can use the playlist function in the esxmanager normal mode to play these songs as well as using the Use Fav function)
 - **Import Music Favorites** – This allows you to take an existing ESXManager playlist and add all of the songs in it to the Favorites menu for use on the ESXManager Music Tab, Use Fav feature.
- **Movies** - This function area allows you to select the use of an ESX Listener to control another computers video card over IP when playing the selected songs. This Listener is sold separately and has a separate manual when purchased. Please contact us at www.12vsystems.com for more information.
- **Maps** – This selection will turn on the “hooks” into Microsoft Mappoint in order to have the Maps tab in the ESXManager function as a stand alone mapping tool with no GPS incorporated. (Mappoint must be loaded for this

selection to work properly and may cause slight skipping in DVD playback depending on your usage habits)

- **Master Listener** – This function only works when using a Listener based system (sold separately) Please contact us for more information at www.12vsystems.com
- **General Setup**–



These settings effect the basic functionality of the esxmanager software for your desired way to use the graphical interface.

- **Debug ON** – With the box CHECKED the mouse will be displayed throughout the ESXManager software. Unchecked will only display a squiggly see through line to identify where the mouse is. (unchecked is desireable when using a system with just a touch screen attached)
- **Show Volume Controls**– With the box CHECKED the volume controls will be displayed in the Music, Movie, and Photos Tabs. With it unchecked they will not be displayed or functional.
- **Minimize to task bar**– With the box CHECKED the esxmanager will minimize to the task bar like any other software when you click on the Show Desktop button on the Main Tab. Unchecked the software will minimize to the systray (icons next to the clock in windows) as a cd icon and can be restored by double clicking on that icon.
- **Allow drag of main form**– With the box CHECKED if you click on a blank spot on the esxmanager software, it can move like a window on the desktop. Unchecked it will stay centered at 800X600 pixels. This is only used when using our software on a desktop PC in a higher resolution than

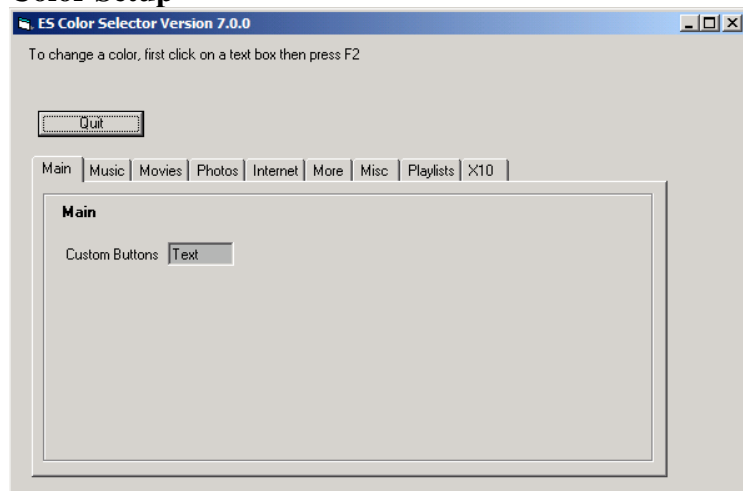
800X600. If you are using a touch screen based system it is advised to leave this unchecked.

- **Misc Controls on Main Tab only**– With the box CHECKED the Setup, Show Desktop, and Exit buttons will only show up on the Main Tab. Unchecked will cause them to show on all tabs. You can move them to a more appropriate location when unchecked by using the Move Controls function, but they will show up in the same location on every Tab.
- **Show Exit button**– With the box CHECKED the Exit button will show up on the Main Tab (or all Tabs if Misc Controls on Main Tab Only is UnChecked). Unchecked will not show up on any Tab and will be non functional.
- **Show Setup button** - With the box CHECKED the Setup button will show up on the Main Tab (or all Tabs if Misc Controls on Main Tab Only is UnChecked). When Unchecked, the Setup button will NOT show up on any Tab. You can enter setup at any time by going to the Main Tab and clicking 4X on the lower left hand corner of the screen.
- **Show Minimize button**– With the box CHECKED the Show Desktop button will show up on the Main Tab (or all Tabs if Misc Controls on Main Tab Only is UnChecked). Unchecked will not show up on any Tab and will be non functional.
- **Show Mute button**– With the box CHECKED the Mute button will show up on the Music, Movies, and Photos Tabs. Unchecked will not show up on any Tab and will be non functional.
- **Setup Password** – Use this function to set up a password to get in to the setup screen when clicking on the setup button. An on screen keyboard will appear when the setup button is clicked or touched and will allow entry only if the correct password is entered. For direct entry with no password the word NO should be displayed in the window.
- **Show Photos Tab**– With the box CHECKED the Photos Tab will show in the ESXManager software. Unchecked will not show up and will be non functional.
- **Show Maps Tab**– With the box CHECKED the Maps Tab will show in the ESXManager software. Unchecked will not show up and will be non functional. NOTE: YOU MUST ALSO

UNCHECK THE MAPS TAB IN THE ADVANCED SETUP MENU TO FULLY DISABLE THE MAPS FUNCTION (Only when Mappoint is loaded)

- **Show Controls Tab**– With the box CHECKED the Controls Tab will show in the ESXManager software. Unchecked will not show up and will be non functional.
- **Grid Font Size** – This field controls the point size of the font in the display areas on the Music, Movies and Photos Tabs. This number cannot exceed the number in the Grid Height field below.
- **Grid Height** – This field controls the Height of the grid spacing in the display areas on the Music, Movies, and Photos Tabs. This number must be higher than the Grid font size field. Raising this number will increase the amount of space between the song, movie, and photo names.
- **Main Page** – This field allows the changing of the main page to a different function than that of Custom Buttons. This field is only present to allow customizations for individual customers that pay for that service. Otherwise it should ALWAYS read CB (for Custom Buttons).

○ **Color Setup –**



Allows you to change the color scheme of backgrounds, text fields, and text where appropriate throughout each individual Tab in the ESXManager software.

- **Sync Home and Car Systems** – This function allows you to synchronize, like a palm pilot, all of the MUSIC files between a home and car systems. A wireless LAN is REQUIRED for this to function properly and you must be within range when performing this function.

- **Move Controls** – Allows you to move every tab button and window within the ESXManager software and save the positions within the Theme itself. All button positions are exclusive to the Theme that you are in. The custom buttons on the main Tab cannot be changed from this function. Their positions are controlled through the custom buttons feature itself.
- **Custom Buttons** – Allows you to create up to 40 buttons on the Main Tab and set a specific internal function or run any windows program from within the ESXManager without having to navigate windows menus. You can size the button and text any size and Label it as you desire from here.
- **Erase All Settings** – Erases all folder settings and wipes out the entire database. Requires a restart of the ESXManager to complete the process. This does not erase your data ie MP3 files or movie files. Only the database within the ESXManager itself. To re-establish the database you only need to re point the Music, Movies, and Photo directories according to the instructions above.
- **Ads/Screensaver** – This feature was designed for Ad sales in commercial vehicles but can also be used for a screen saver privately.
- **X10 Setup** – Allows setup of the integrated X10 support for controller #xxxxxxx. You will need to have a wireless lan in your home and car to control any x10 devices in your home from your car. Does not support the viewing of x10 Cameras.
- **Themes** – Allows you to select a theme. To build your own theme, copy the c:\program files\esxmanager\esgraphics\Mobile Warrior II directory and name it your own Theme name. Replace every gif an jpeg with your own modified version but keep the same name and directory structure. When you restart the software, the new theme will display in the window and can be selected while in our software. Play around with the Move controls feature to put the buttons and screens wherever you want.
- **Listeners Test (Sold Separately)** – Allow you to use this interface to control the sound and video on another PC or Mobile Warrior II unit. Contact us for more details – www.12vsystems.com.

- **Music**



- **Loading Music**

- **Loading a CD –**

SPECIAL NOTE : The ESXManager provides a MP3 Loader to load the music automatically into the ESXManager Database format. This format allows you to use the ESXManager Music player like it is a 5000 disc CD Changer that displays the names of the artist, album, and song names in their track number order by album name. To utilize the power and ease of this database you must load the music into a Music folder (default is c:\music) in the following directory structure:

Artist name\ album name\ track number – songname.mp3 (or .wav)

If it is not in this order then your songs will not display properly or not at all. If you choose to use any external software to load music, you must set up that loader to save in the above mentioned format and refresh the MP3 Database from the setup menu in order to see them in the ESXManager Music Player or use the Add Misc Songs function in the Digital Music Setup Utility Listed above.

- **Using the built in MP3 Loader** - go to the Main Menu and click or touch the Load Music Button (For more info on setting up this button or renaming it, please go to the Main tab Custom buttons configuration section of this manual).
 - Once the Load Music utility is up, insert your cd into the cdrom drive

- If the system is connected to the internet, it will then access FREEDB and lookup the CD. If the names are in the database, it will fill in all of the fields for you. If it is not in the database or if the internet is not available, you will need to fill in these fields yourself.

ARTIST AND ALBUM FIELDS MUST BE ENTERED FOR YOU TO ACCESS THE CD YOU ARE LOADING.

The Track number is automatically put in the song name for you so all you need to enter is the song name itself. To enter data into any field just click or touch on that field and the blinking line cursor will move there. Then click or touch the keyboard button to use the on screen keyboard or you can just use a keyboard that you have attached to your Mobile Warrior or Home Warrior systems.

- When the information in all of the fields is the way you want it to read, click or touch the Rip It button and all tracks will be loaded into the listed directory (default is c:\music) in MP3 format at a 192 bitrate and will be added to the database automatically.
- When the loading process is complete, you can then exit the Loader Utility by clicking or touching the X in the upper right corner of the screen and then proceed to the Music tab to locate and play the new album.

- **Loading Individual MP3's or Wav files from another drive**

- Connect the drive to your Mobile Warrior system
- Go to the Main Menu and click or touch the setup button
- Click or Touch on the Setup Digital Music button
- Follow the steps listed in the Setup Digital Music section of this Manual (above)

- **Playing Music**

- **Modes**

- **Normal** – The Normal mode works just like any CD Changer that displays the Artist, Album, and Song Names for you. To look up any particular song you just start at Artist, Album, or Song depending on what you know to find the title you are looking for by clicking or touching the corresponding button in the middle of the screen. Clicking or touching 2x on the song title or 1X and clicking or touching play will play the song. All other buttons function just like a normal CD Player.

- **How to Play Music (Sample scenarios)** – Playing music is pretty self explanatory and is covered above. Below are some sample step by step directions to play the most common ways in Normal Mode

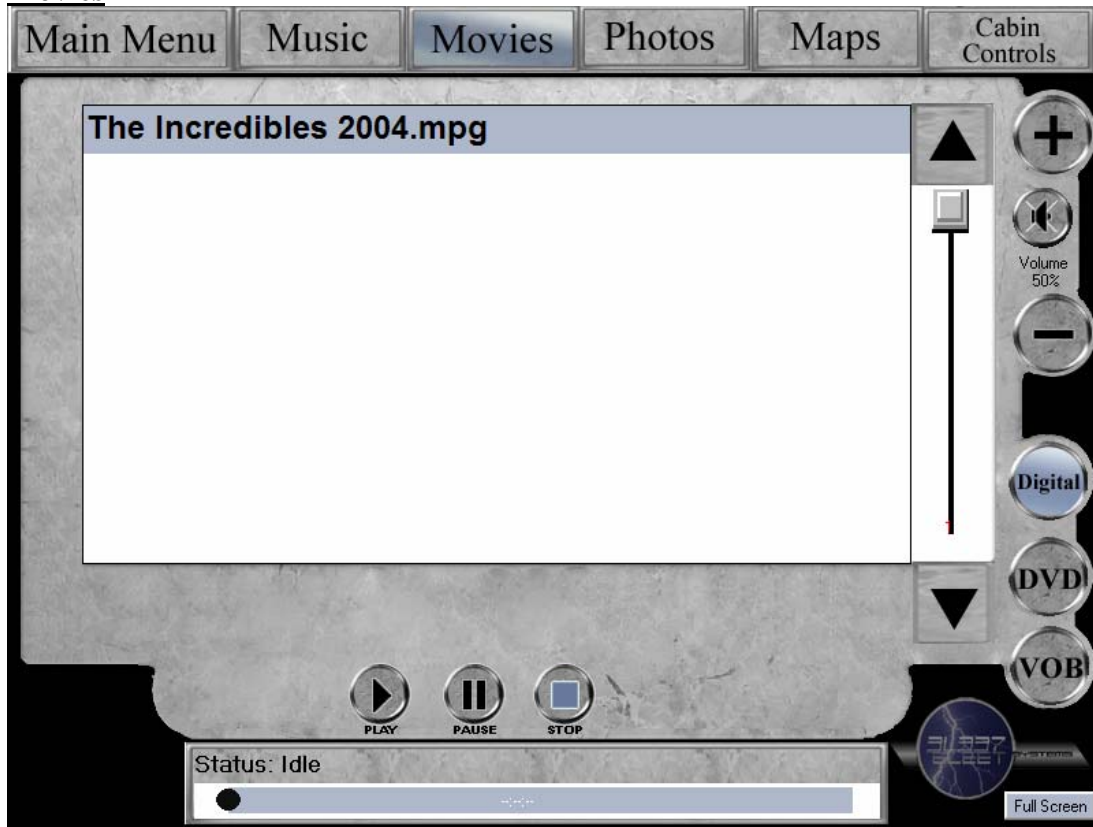
- **Playing an album**

- Click or touch on the Artist button
- Using the scroll bar or up and down arrows on the screen, find the Artist you wish to hear and click or touch the name of the Artist on the list.
- The Artist will now be highlighted at the top of the list and all of the Albums you have loaded for that Artist will be displayed below it
- Click or Touch on the name of the Album you wish to hear
- The songs in that Album will now be displayed in track number order and the first track will be highlighted.
- Click on the play button or click or touch 2X on the song you wish to begin with and it will begin playing. It will progress just like a CD Player through the tracks one after the other. You can also select continuous, repeat, or random just like a CD Player.
- **Playing all songs randomly**
 - Click or touch the Song button on the middle of the screen. This will list all of the songs in alphabetical order.
 - Click or touch the Random button
 - Click or touch the Play button and the esxmanager will now play randomly through your entire song list that is loaded on the Mobile Warrior System.
- **Playlists** – You can create, use and edit play lists by clicking or touching on the Playlist button on the Music Tab. When you do this it will save them in .M3U format (Winamp format) in the c:\program Files\esxmanager\playlists folder. You can have as many songs you wish in each playlist and can change the order from this interface.
- **Favorites** – The favorites feature was requested by our Lamborghini SUV customer in pre 4.0 versions of the esxmanager. We have since enhanced this and grown it to its current use. This feature allows you to mark any song as a “Favorite” at any time quickly and easily. You can then Use your favorites to only hear songs you like without taking the time to build a playlist. Favorites can be exported to a playlist at any time through the ESXManager Setup utility.

- **Add FAV** – To add a favorite, navigate to the track/song that you like or if it is already playing, just click or touch the Add FAV button on the left side of the screen. It is now in the Favorites list and will be displayed in italics from now on until removed from the favorites list.
 - **Use FAV** – Click on the Use FAV button on the left of the screen and all of the songs you have marked as favorites will display in alphabetical order on the display window. Each song has a DEL button next to it. If you want to remove a song from the favorites just click its corresponding DEL button and it is removed. Click on Random and play and only the songs you have marked as favorites will play randomly
 - **Exporting Favorites to a Playlist** – You can export your favorites list to a playlist at anytime from the ESXManager setup menu on the Main Tab. Please refer to this section in the setup manual to perform this function.
- **Progress Bar at the bottom of the screen** – The progress bar at the bottom of the screen displays the current track playing, the duration of the song and how much time is left in the song. You can click anywhere on this bar to skip throughout the song instantly. You can also double click on the name of the song that is playing and it will take you back to the Artist, Album and song list where it came from.
- **Jukebox** – The Jukebox mode works like any diner style Jukebox machine. You browse through all the artist albums and songs, select several you want to hear, and they play in the order you selected them and never repeat. Select the Jukebox mode prior to playing any music by clicking or touching the Jukebox button on the lower left of the Music Tab.
 - **Playing Jukebox songs** – Songs are selected just as they are in the Normal mode except you need to click 2x on the song to add it to the jukebox. When it is added a line appears at the top of the text area telling you how many songs are in the jukebox.
 - **Viewing Songs in the Jukebox** – The Playlist button in Normal mode is replaced by a Jukebox button in Jukebox mode. Click on the Jukebox button and all of the songs you selected will display on the screen. To select more songs just click on the Artist, Album, or Song buttons to locate the song you want and double click on the song desired.

- **Removing a song from the Jukebox** – When you click on the Jukebox button a trash can button appears on the play line. Highlight the song you wish to delete by clicking on it 1X and click on the trash can button. The song will be removed from the jukebox list

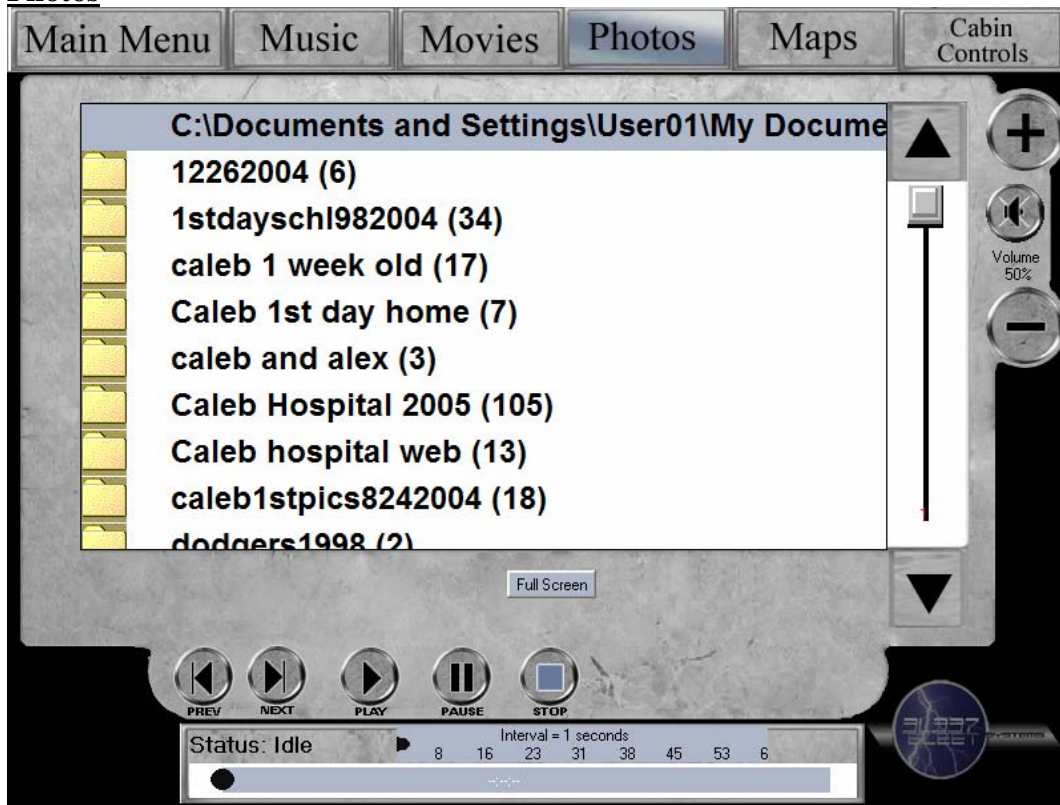
- **Movies**



- **Loading** – To Load movies you must have the AVI, MPEG/MPG, or MOV files all ready on a CD, DVD or external drive. You can then copy them to the Mobile Warrior system into the default directory of c:\movies or into a directory of your choice and follow the instructions under Movie Setup in the Setup section of this manual (above).
- **Playing Movies**
 - **Digital**
 - Go to the Movies Tab by clicking or touching the Movies button at the top of your screen
 - Click or touch on the Digital button located on the lower right hand side of the screen
 - Double click or tap 2X on the movie you want to see and it will begin playing. You can also click or tap 1X and click on the play button.

- Using the slider bar at the bottom of the screen, you can skip anywhere in the movie by clicking or touching on any spot along the bar
- To go to full screen, click on the full screen button or double tap the window where the movie is playing
- Tapping on the screen 1X will return you to the control screen
- **DVD**
 - Go to the Movies Tab by clicking or touching the Movies button at the top of your screen
 - Click or touch on the DVD button located on the lower right hand side of the screen
 - Make sure that the DVD is in the DVD Drive of the Mobile Warrior system
 - Click on the Play button
 - The DVD Menu will come up just like on any home DVD player and you can click or touch on the menu options directly to navigate the DVD as desired.
 - Using the slider bar at the bottom of the screen, you can skip anywhere in the movie by clicking or touching on any spot along the bar or you can use the previous and next buttons to skip through the chapters. Clicking on the Menu button will return you to the previous DVD Menu
 - Once playing you must click on the full screen button to go to full screen.
 - Tapping on the screen 1X will return you to the control screen
- **VOB**
 - Go to the Movies Tab by clicking or touching the Movies button at the top of your screen
 - Click or touch on the VOB button located on the lower right hand side of the screen
 - Make sure that there IS any DVD in the DVD Drive of the Mobile Warrior system (this function will be corrected in a later version of the ESX Manager software as demand requires)
 - Double click or tap 2X on the movie you want to see and it will begin playing. You can also click or tap 1X and click on the play button.
 - Using the slider bar at the bottom of the screen, you can skip anywhere in the movie by clicking or touching on any spot along the bar
 - The DVD Menu will come up just like on any home DVD player and you can click or touch on the menu options directly to navigate the DVD as desired depending on how the VOB was Ripped to files

- **Photos**



The Photos Tab is for displaying photos in a slideshow fashion. The folders display with a black number next to them telling you how many pictures are in that particular folder. By clicking or tapping 2X on the folder of your choice it will display the filenames of the picture files in it. Click play and you will see the pictures begin to cycle through at the interval set on the slider below indicating how many seconds to wait before changing the picture. You can set this by moving the adjustment slider from left to right. To go full screen you can click or touch 2X on the picture window or click the Full Screen button. You can then control the slide show by tapping on the full screen image and using the control bar that comes up. If you are playing music from the Music Tab, it will continue to play while you are playing a slideshow.

- **Maps**

The screenshot shows the 'Maps' tab selected in the ESXManager software. The top navigation bar includes buttons for 'Main Menu', 'Music', 'Movies', 'Photos', 'Maps' (which is highlighted), and 'Cabin Controls'. The main area of the tab is a large, empty light gray rectangle. At the bottom, there is a search and navigation interface. On the left, there are input fields for 'Street', 'City', 'State' (with 'CA' entered), and 'Zip'. To the right of these fields are buttons for 'Zoom In', 'Zoom out', 'Keyboard On', and a 'FIND' button. A large white rectangular area on the right side of the bottom panel is intended for the map display.

– The Maps Tab integrates Microsoft’s MapPoint into the ESXManager Software for use as a built in Map lookup utility. GPS is not supported within this TAB, only Map Lookup. If you wish to Utilize GPS features on this system, a third party PC program will need to be purchased and loaded into the system, and then launched by a button on the Main Tab. See the Setup section of this manual for more information on using the integrated MapPoint in the ESXManager. The Maps cover all 52 States with extreme detail and directions can be looked up by using the basic toolbars provided by Microsoft MapPoint. MapPoint must be loaded for this Tab to work properly and may cause a slight slow down of the system depending upon user usage. (you can thank Microsoft for the limited functionality of this Tab!!!)

- **Controls**



– The Controls Tab allows you to integrate any X10 device with the exception of X10 camera viewing (you can control just not view from this Tab). You must use model #xxxxxxx X10 controller available on www.12vsystems.com or at your local X10 retailer. Once plugged into the serial port on the Mobile Warrior or if you are on a wireless network, it must be plugged in to a PC on the network and that PC's IP must be programmed into the X10 Setup in the ESXManager Setup Menu.