

ReadMe Windows XP

1. Check your software version number

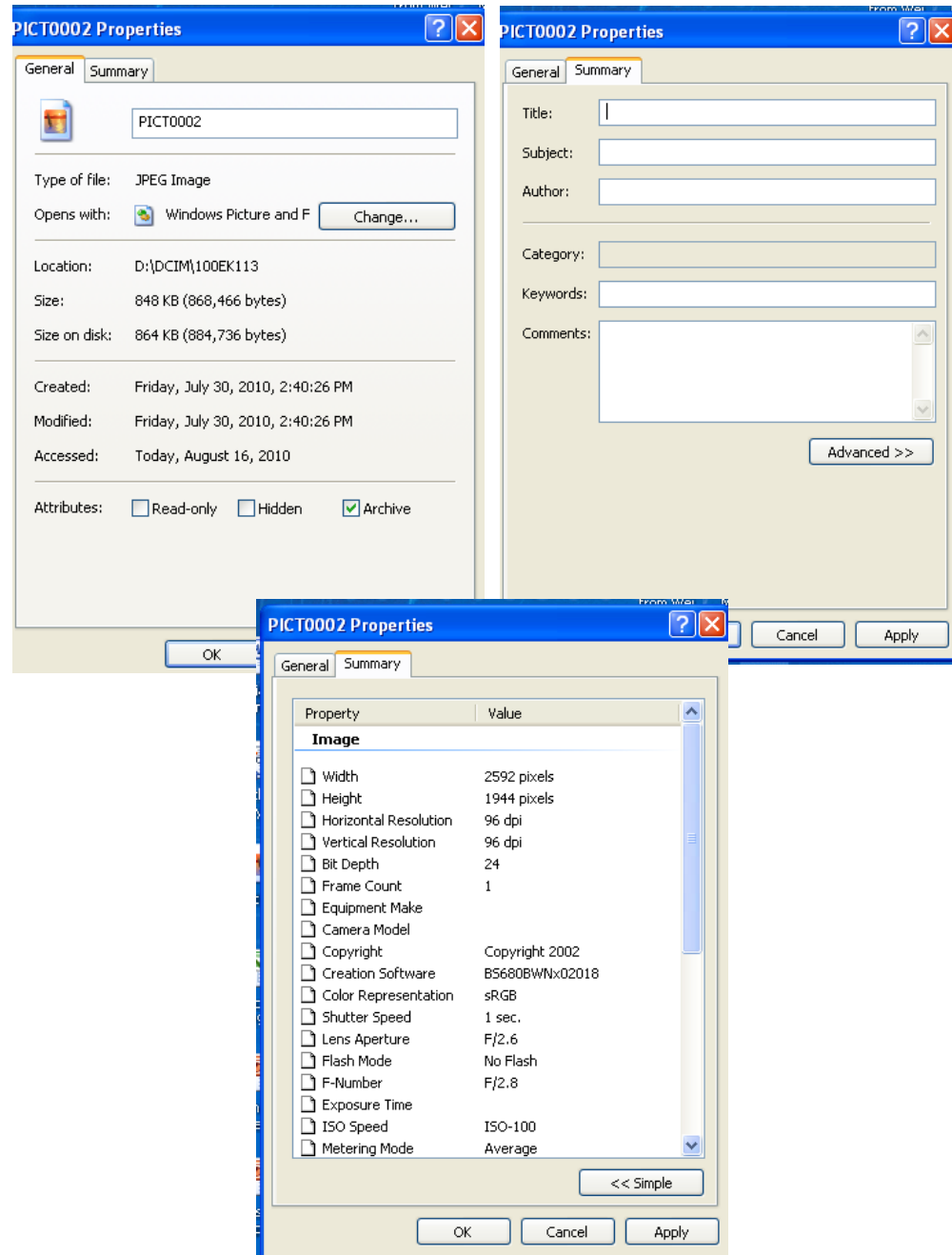
- You need to view the version number of the camera by viewing the properties of an image taken with the camera. To do this see below:
- Right click on the image to select properties. Select the summary tab under properties and then click the advanced button to view the creation software version. See screen shots at right.
- View the properties of the image as described and shown in the screen shots to verify that the creation software version is less than "x02020". If less than x02020, then the update is required.

2. The procedure is as follows:

- Save downloaded files to a blank SD Card (16GB card or smaller—8GB or smaller on 119425/119425C). Make certain that the software update corresponds to the model that you wish to update. If you install this update to a EK115 camera or you don't match the software to the model number, you could erase your camera memory permanently.
- Put 8 New batteries into Trophy Cam (WARNING—THIS IS A CRITICAL STEP. IF POWER IS INTERRUPTED DURING UPDATE, THE CAMERA MEMORY MAY BE PERMANENTLY ERASED.)
- Insert SD card into unit
- While pressing and holding the UP/VIDEO button, switch unit to SETUP. (Note the camera will appear as if it is NOT turned on. The screen will not power up during this step.)
- Continue to hold UP/VIDEO button for 20 seconds
- After 20 seconds release button and leave camera in SETUP mode for 2 minutes (updating)
- After 2 minutes, switch camera to OFF.

3. Optional Cross Check

- Turn camera to SETUP mode, press the SHOT button to take a new image with camera.
- Turn unit OFF.
- Remove SD Card and insert into your computer to view the image.
- Right click on the image to select properties. Select the summary tab under properties and then click the advanced button to view the creation software version. See screen shots at right.
- View the properties of the image as described and shown in the screen shots to verify that the creation software version is "x02020".
- The upgrade is then confirmed.



ReadMe Windows 7

1. Check your software version number

- You need to view the version number of the camera by viewing the properties of an image taken with the camera. To do this see below:
- Right click on the image to select properties. Select the details tab to view the program name version. See screen shot at right.
- View the properties of the image as described and shown in the screen shot to verify that the program name version is less than "x02020". If less than x02020, then the update is required.

2. The procedure is as follows:

- Save downloaded files to a blank SD Card (16GB card or smaller—8GB or smaller on 119425/119425C). Make certain that the software update corresponds to the model that you wish to update. If you install this update to a x01 camera or you don't match the software to the model number, you could erase your camera memory permanently.
- Put 8 New batteries into Trophy Cam (WARNING—THIS IS A CRITICAL STEP. IF POWER IS INTERRUPTED DURING UPDATE, THE CAMERA MEMORY MAY BE PERMANENTLY ERASED.)
- Insert SD card into unit
- While pressing and holding the UP/VIDEO button, switch unit to SETUP. (Note the camera will appear as if it is NOT turned on. The screen will not power up during this step.)
- Continue to hold UP/VIDEO button for 20 seconds
- After 20 seconds release button and leave camera in SETUP mode for 2 minutes (updating)
- After 2 minutes, switch camera to OFF.

3. Optional Cross Check

- Turn camera to SETUP mode, press the SHOT button to take a new image with camera.
- Turn unit OFF.
- Remove SD Card and insert into your computer to view the image.
- Right click on the image to select properties. Select the details tab to view the program name version. See screen shot at right.
- View the properties of the image as described and shown in the screen shot to verify that the program name version is "x02020".
- The upgrade is then confirmed.

